



Opioid Settlements Update

Manager's Funding
Recommendations:
FY24-25

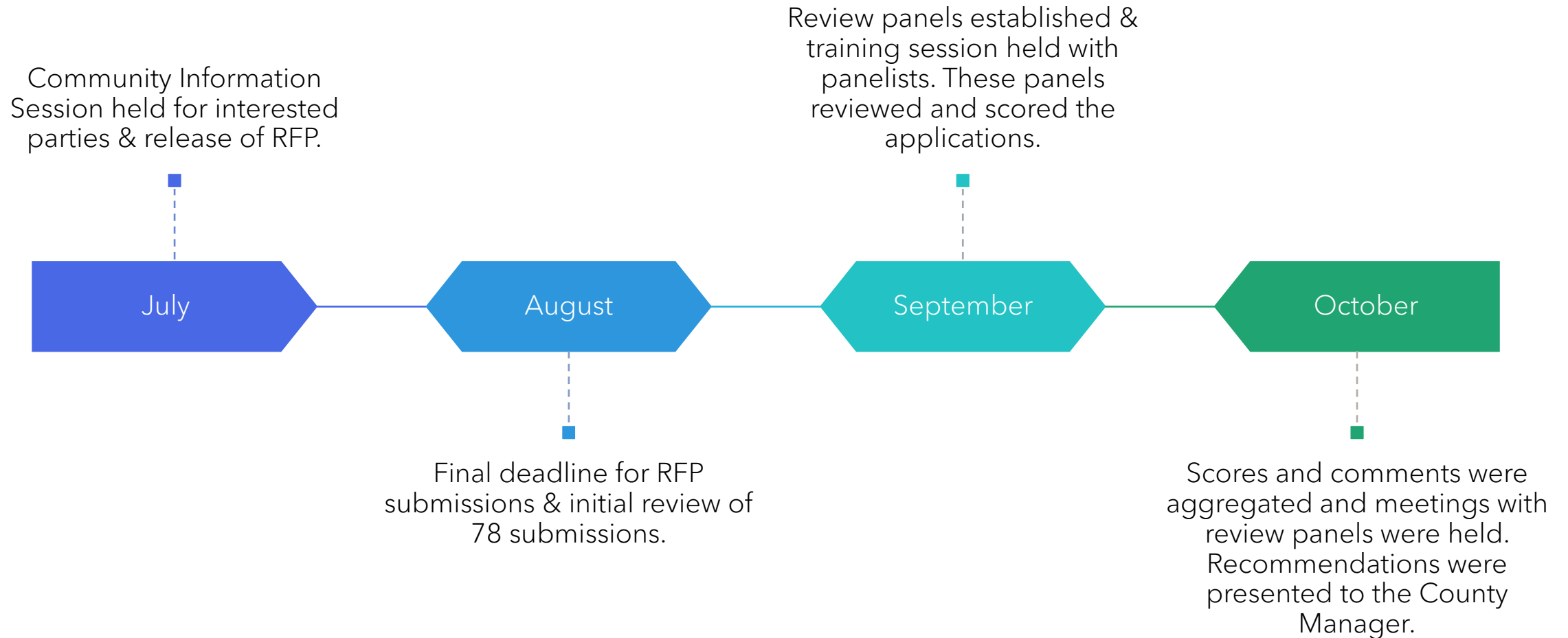
Agenda

- Summary of Achievements
- The Community Application Process
- Overview of Applications Submitted
- Review Criteria
- Recommendations for Funding
- Next Steps

Summary of Achievements

- Executed a contract with Alliance Health to expand Early Intervention Services, Evidence-Based Addiction Treatment and Recovery Support Services in their provider network.
- Implemented a contract with Queen City Harm Reduction to expand their Syringe Services Program.
- Established collaborative meetings with the Northern and Southern towns to coordinate and communicate about resources related to Opioid Settlements funding.
- Opened a community application portal and completed a review of applications to produce recommendations.
- Hired a new team member in County Manager's Office to help lead the implementation of initiatives.

TIMELINE OF EVENTS



Applications by Funding Strategy

	Number of Applications	Amount of Funding Available	Funding Requested	Number of Proposals Funded
Early Intervention	8	\$750,000	\$2,146,361	3
Evidence-Based Addiction Treatment	19	\$750,000	\$11,005,857	2
Employment-Related Services	9	\$525,000	\$2,703,937	3
Recovery Housing Support	18	\$3,000,000	\$13,112,331	5
Recovery Support Services	24	\$1,000,000	\$8,071,537	4
<u>Total</u>	78	\$6,025,000	\$37,040,023	17

Considerations for Proposals



CAPACITY TO
ADDRESS THE
OPIOID EPIDEMIC



FEASIBILITY OF
PROJECT



HARM REDUCTION
APPROACH



EQUITY



BUDGET





The Manager's Recommendations

OPIOID SETTLEMENTS: FY24-25



Early Intervention

Early Intervention

Program Name	Thompson Child and Family Focus
Estimated Funding	\$253,000
Description	Implement a national, evidence-based program, Friends of the Children. A component of Friends of the Children is a curriculum – Health and Opioid Prevention Education (HOPE) which focuses on the dangers of prescription opioid use. The program is a two-generation model for youth and caregivers. Services will be provided in 30 area schools as well as in the community. Across the life of the program, 275 families will receive three to four hours of services per week.

Early Intervention

Program
Name

Children's Home Society of North Carolina

Estimated
Funding

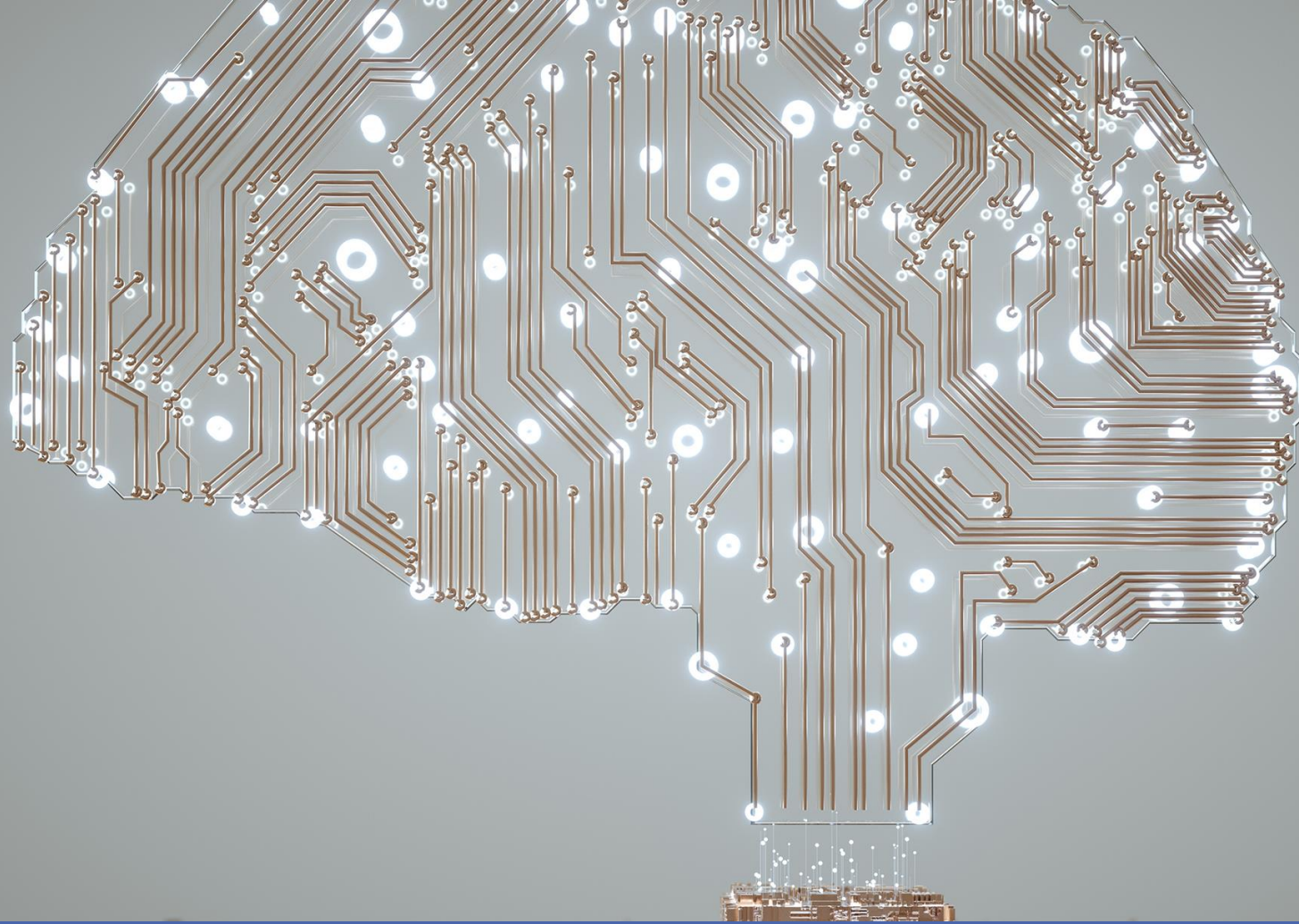
\$110,000

Description

Provide quarterly training to 100 foster parents so they can maintain their license regardless of what agency they are licensed with. There is a shortage of providers offering this early intervention education making it difficult for foster parents to maintain their licensure. Foster parents across the County will be offered the training and a substance use prevention kit.

Early Intervention

Program Name	Project 658
Estimated Funding	\$386,000
Description	Implement three evidence-based, early intervention curricula focused on building resilience: Practice Self-Regulation, Resource Parent Curriculum and Everyone Can Be Trauma Informed. Nearly 360 individuals, families, and practitioners are projected to be served. The program will focus on reaching youth and families with greatest risk factors for substance use.



Evidence-Based Addiction Treatment

Evidence-Based Addiction Treatment

Program Name	Charlotte Health Community Clinic
Estimated Funding	\$500,000
Description	Offer an established integrated behavioral health and Medication-Assisted Treatment (MAT) program that serves individuals who are underinsured or uninsured. The team consists of primary care providers, behavioral health consultants, social workers, and additional clinical staff. Funding will allow the program to nearly double its capacity.

Evidence-Based Addiction Treatment

Program Name	Amity Medical Group
Estimated Funding	\$250,000
Description	Utilize funds for Medical-Assisted Treatment (MAT) to support uninsured and underinsured patients and transportation vouchers to travel to Amity sites for MAT treatment. Amity Medical Group meets all the eligibility requirements of a Federally Qualified Center and is seeking full FQHC status. The medical group provides integrated addiction, mental health, and primary care services across their four locations.



Employment-Related Services

Employment-Related Services

Program Name	Hope Haven
Estimated Funding	\$166,000
Description	Funds will be utilized to support the initiation of a Workforce Development Department. The department will be led by a Licensed Clinical Social Worker and will provide residents soft skills (professionalism and communication) as well as technical skills and job placement. Residents will be offered financial assistance for items required to obtain employment. A scholarship fund will be developed to allow residents opportunities such as obtaining certifications, training programs, and GED preparation.

Employment-Related Services

Program Name	Charlotte Area Fund
Estimated Funding	\$200,000
Description	Offer comprehensive employment services tailored to individuals in treatment or recovery from opioid addiction. Clients will have access to over 20 workforce development programs as well as employment success coaches. In addition, Charlotte Area Fund will offer wraparound services like housing and childcare assistance to support clients and provide employment stability. Charlotte Area Fund helps clients to obtain certificates in high demand fields such as highway construction, fiber optics, HVAC, and entry level medical certifications. The program will serve 80 clients across the project life cycle.

Employment-Related Services

Program Name	National Center on Institutions and Alternatives
Estimated Funding	\$158,000
Description	Employment related services will be provided to individuals in treatment or recovery from opioid use disorder. Services will include vocational training, job placement, interview coaching, resume review, and wrap around supportive services. Participants enroll into a 17-week course in one of three career tracks: Automotive Repair, CDL Class B, and HVAC. In addition, participants are provided wraparound case management, workplace readiness skills, job placement, and career counseling. The center currently has partnerships in the community with several long-term substance use recovery programs.



Recovery Housing Support

Recovery Housing Support

Program Name	Hope Homes Recovery Services
Estimated Funding	\$820,000
Description	<p>Expand recovery housing capacity to serve an additional 40 individuals in six MAT capable homes. Hope Homes serves as a low barrier bridge between residential treatment programs and independent living. Hope Homes will also utilize the funding to support sober events for residents and required transportation. Through the MAT capable homes, participants will have access to seven Peer Support Specialists. The Peer Support Specialists and training to support their development are also supported through this funding.</p>

Recovery Housing Support

Program Name	Queen City Harm Reduction
Estimated Funding	\$1,000,000
Description	Funds will be utilized for rental subsidy and support services to people in treatment, recovery, and in active use. Services include intensive case management, move-in deposits, and rent and utility support. The funding will support hiring a Licensed Clinical Social Worker and Peer Support Specialist as well as a housing specialist and evaluator. The program will provide permanent supportive housing to 40 people per year and rental and utility assistance to an additional 135 Queen City Harm Reduction program members.

Recovery Housing Support

Program Name	Oxford House
Estimated Funding	\$637,000
Description	Provide services to the re-entry and justice involved community. The program will house 50 individuals who are transitioning from incarceration or on probation/parole to the Oxford House. Funding will also support training at least 300 residents on overdose prevention and response. This funding will pay for two field positions, a re-entry coordinator and training and education coordinator.

Recovery Housing Support

Program Name	McLeod Centers for Wellbeing
Estimated Funding	\$250,000
Description	Develop an emergency financial assistance fund to support past due rent and utility disconnection. Individuals who apply to these funds will be connected to a financial navigator. The financial navigator will review applications, prioritize funding and work with clients one-on-one to achieve financial stability. The goal of this program is to provide resources so that clients do not have to choose between paying for treatment and paying for housing.

Recovery Housing Support

Program Name	Continuum Care Services
Estimated Funding	\$393,000
Description	Support a pilot recovery housing program for women of color. They will specifically target low-income women who are part of the re-entry community. Safe living spaces will be provided for 12 women. Clients will be provided culturally relevant treatment and recovery support services. Clients are provided housing for up to nine months. Funding will support one case manager, two house managers as well as funds to secure an appropriate home.



Recovery Support Services

Recovery Support Services

Program
Name

Hope Haven

Estimated
Funding

\$250,000

Description

Hire a new team of certified Peer Support Specialists that will focus on helping residents build “recovery capital” and have the resources they need to improve their overall well-being. Through the funding, three Peer Support Specialists will be hired to serve as recovery navigators. Recovery navigators will help clients move towards wellness, self-sufficiency, and economic mobility. Funding will also support connecting residents to free and reduced-cost health services in the community.

Recovery Support Services

Program
Name

SMART Recovery USA

Estimated
Funding

\$210,000

Description

Utilize funds to expand evidence-based mutual support groups that focus on self-management and recovery training. The funds will be utilized to hire a community outreach coordinator to cultivate a local community of practice that includes providers and organizations who are committed to prioritized communities. Goals of the project include increasing community-wide education and awareness through trauma informed training and using the lived experience of people to raise awareness and decrease stigma.

Recovery Support Services

Program
Name

Carolina Cares Partnership

Estimated
Funding

\$372,000

Description

Utilize the funding to provide peer navigation and mental health treatment to Latinx and LGBTQIA populations in treatment and recovery. Funds will be utilized to hire a Peer Support Specialist as well as an Addictions Specialist to provide substance use treatment to 100 individuals across two years. In addition, the funds will partially support the LGBTQIA Director to provide oversight for the program, supervise staff, and collect and manage data related to the project.

Recovery Support Services

Program
Name

Amity Medical Group

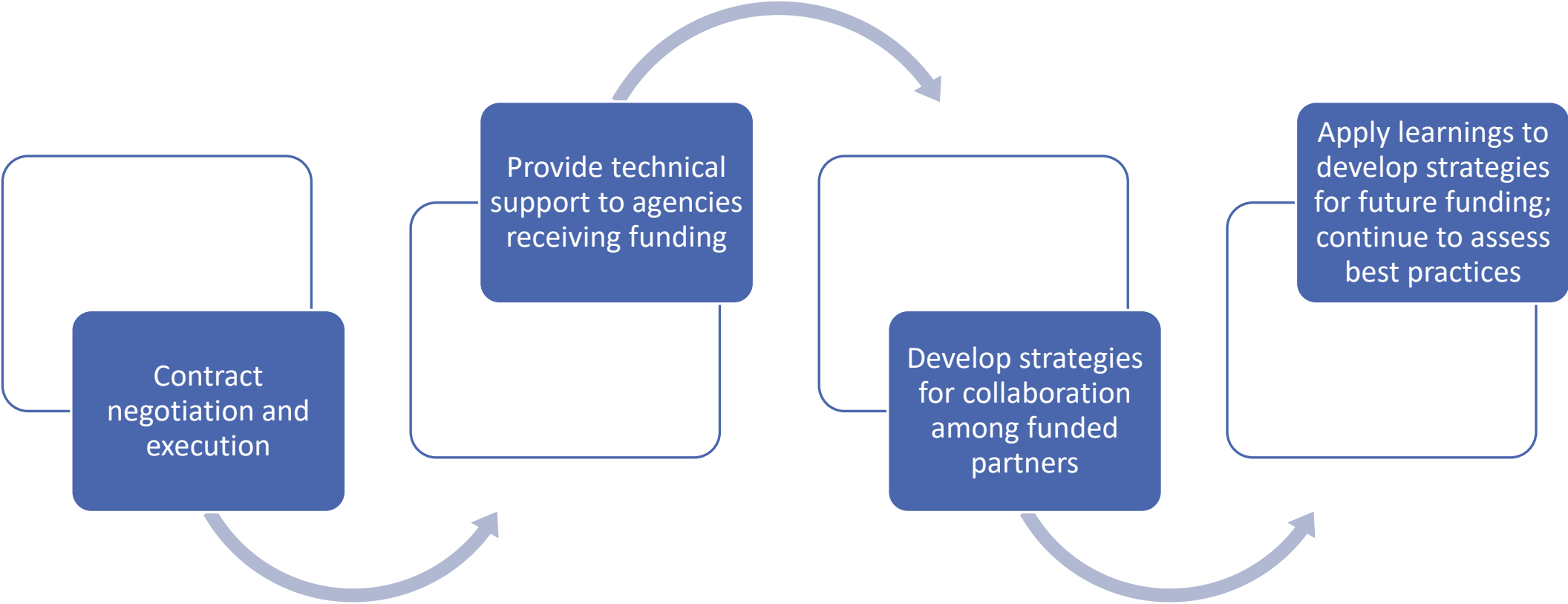
Estimated
Funding

\$167,000

Description

Fund two positions for recovery support services, a Peer Support Specialist and a Licensed Clinical Addiction Specialist - Associate (LCAS-A). Duties assigned to the Peer Support Specialist will include community outreach, recovery support services, harm reduction services, and connections to primary health care. The LCAS-A will work in tandem with the Peer Support Specialist and provide case management and navigation services, connections to treatment, and wraparound supports.

Next Steps



Board Requested Action

- **Requested Action:** Authorize the Manager to negotiate contracts with the recommended funding partners, to include:
 - o Deeper review of the proposals' budgets (salary, operating, administrative and capital)
 - o Define performance metrics to ensure alignment with NC MOA policy and other County initiatives where applicable
 - o Review outcomes reporting and financial reporting requirements



Opioid Settlements Update

Manager's Funding
Recommendations:
FY24-25
