

A photograph of the Charlotte Mecklenburg Library building, a modern structure with a brick facade and a blue roof. The building is surrounded by greenery and a parking lot. The sky is blue with white clouds. The text "Impact Report" is overlaid in large, light blue, 3D-style letters.

Impact Report

Charlotte Mecklenburg Library

Mecklenburg Board of
County Commissioners

November 6, 2024

CHARLOTTE MECKLENBURG
LIBRARY

Library Fast Facts

FY2024 Totals

8,675,973

Total Circulation

656,783

Wifi Usage

2,261,354

Library Visitors

21

Locations

+ Library Administration Center

341,412

Active Cardholders

487

Library Employees

20,670

Programs

\$53,792,130

FY2024 Annual Budget



Growing to
improve lives

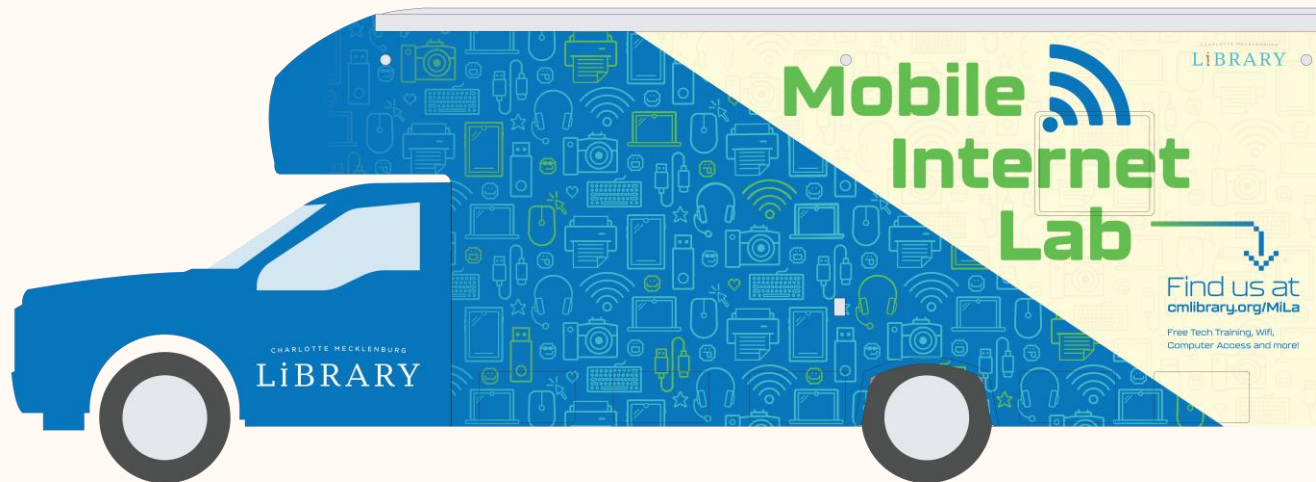
NEW Chief Equity & Inclusion Officer



- Serve as the Library's representative regarding Mecklenburg County E&I efforts
- Develop/acquire training and development tools to aid the Library's E&I initiatives
- Lead efforts to address the work identified in the Library's Racial Equity Task Force report
- Identify opportunities to improve/enhance current Library operations, policies, and practices

American Rescue Plan Act (ARPA)

- Additional outreach vehicle—
Mobile Internet Lab (MiLa)
- Free hotspots for customer checkout
- Electronic resources and digital collections to serve high need populations
- Redesigned “DigiLit” (digital literacy) curriculum



Partnering with the Community



CHARLOTTE-MECKLENBURG
LIBRARY





Expanding our reach to
build a stronger
community

University City Regional Library

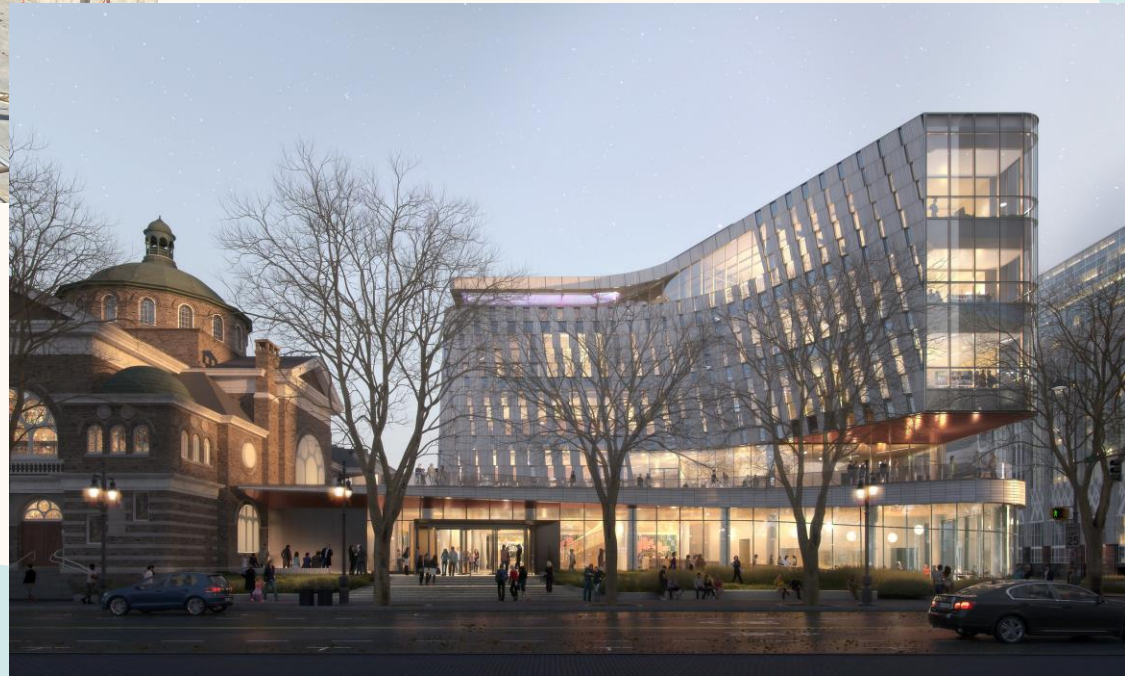


Opening
February 2025

New Main Library

Opening 2026

Construction
October 2024



Capital Improvement Plan

West
Boulevard
Library

Sugar
Creek
Library

Nations Ford
Library



- Regional Branches
- Neighborhood & Community Branches
- Branch Relocation
- New Branch

CML Strategic Direction

FY2026-2028

New Main Library

Deliver Charlotte Mecklenburg Library's flagship location in Uptown Charlotte, a destination for local, regional, and national engagement.

Prepare & Excel

Strengthen internal resources and capacity to support planned growth and ensure the sustainable impact of Charlotte Mecklenburg Library.

Access & Welcome

Ensure the Library provides a welcoming environment and access to all it has to offer every member of the community.

Learn & Engage

Create opportunities for engagement and growth, learning new skills and pursuing passions to build a stronger and more connected community.

Charlotte Mecklenburg Library Board of Trustees



Charles Thomas
Chair



**Amy Hawn
Nelson**
Vice Chair



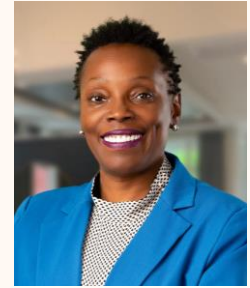
Joe Helweg
Immediate Past
Chair



Ailen Arreaza
Trustee



**Peggy
Brookhouse**
Trustee



Stacey Brown
Trustee



Jon Buchan
Trustee



Kimmerly Martin
Trustee



Tracy Montross
Trustee



**Preethi
Srinivasan**
Trustee



Ricky Woods
Trustee

Thank you!

