

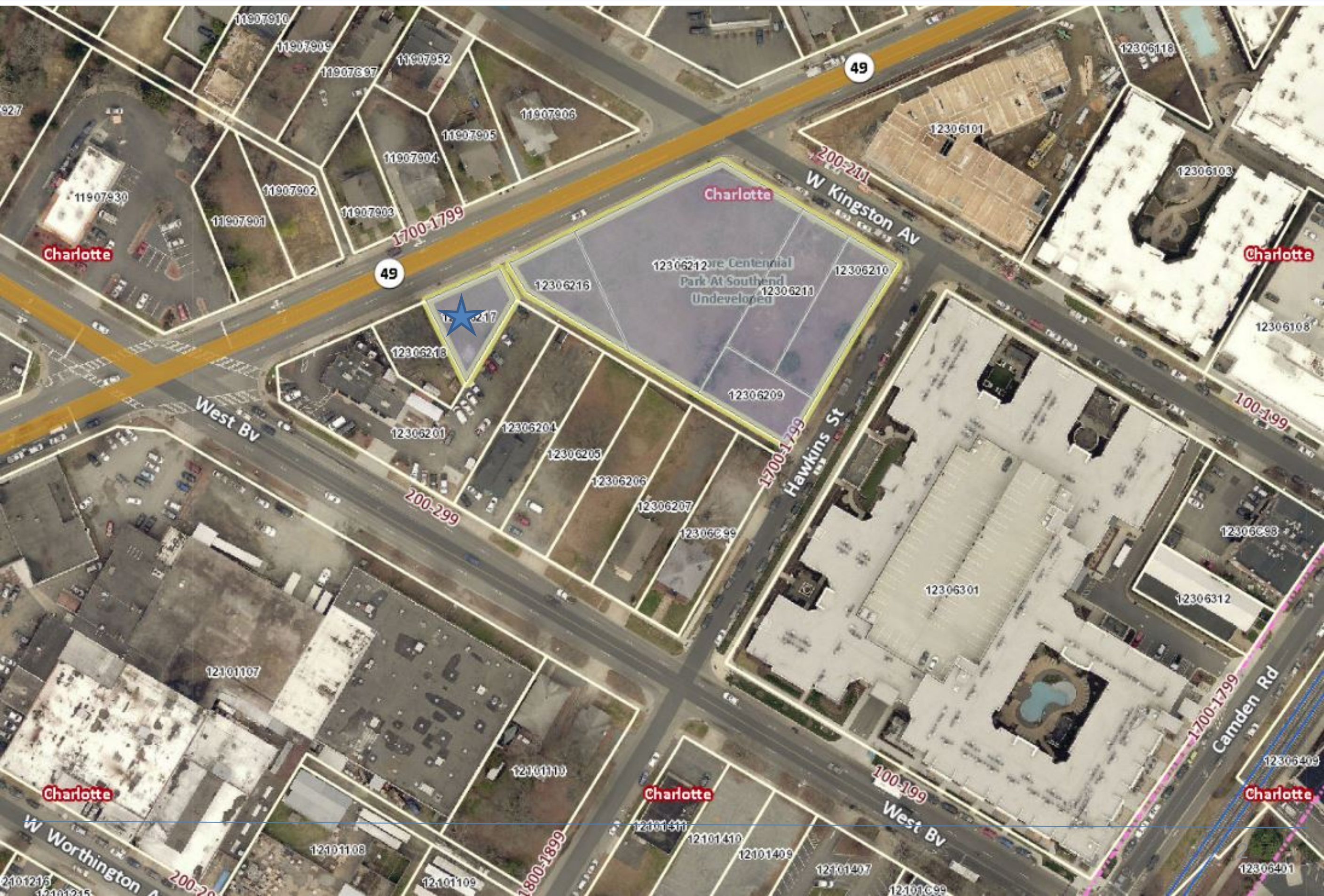


# Land Exchange – Wilmore Centennial Park at Southend

November 7, 2018



# Land Exchange – Wilmore Centennial





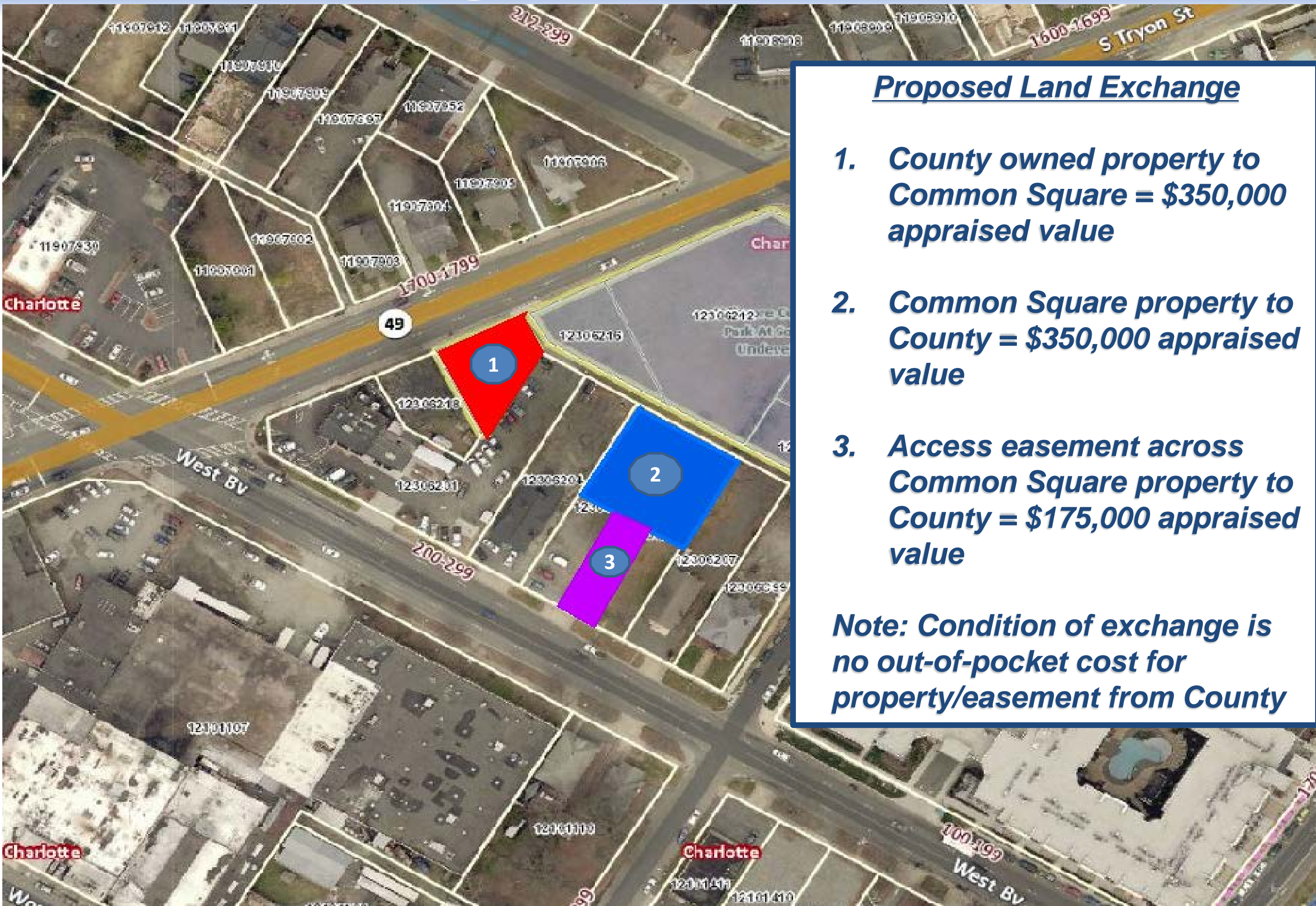
This is an aerial map of a portion of Charlotte, North Carolina. Three specific parcels are highlighted with colored overlays and numbered circles:

- Parcel 1:** A red triangle-shaped parcel located near the intersection of West Blvd and a road labeled '1700-1799'. It contains a blue circle with the number '1'.
- Parcel 2:** A blue square-shaped parcel located to the east of Parcel 1, near the road labeled '200-299'. It contains a blue circle with the number '2'.
- Parcel 3:** A purple rectangle-shaped parcel located south of Parcel 2, near the road labeled '200-299'. It contains a blue circle with the number '3'.

The map shows various other features including street names (e.g., 'West Blvd', 'Charlotte'), parcel numbers (e.g., '11907301', '12306216'), and a highway shield for '49'. The word 'Charlotte' is printed in red in the bottom left and bottom right corners.

- ***Future Temporary Construction Easement on park site (conditions yet to be determined)***
- ***County to sign City of Charlotte Rezoning and Subdivision Applications***

# Land Exchange – Wilmore Centennial



## Proposed Land Exchange

1. **County owned property to Common Square = \$350,000 appraised value**
2. **Common Square property to County = \$350,000 appraised value**
3. **Access easement across Common Square property to County = \$175,000 appraised value**

**Note: Condition of exchange is no out-of-pocket cost for property/easement from County**