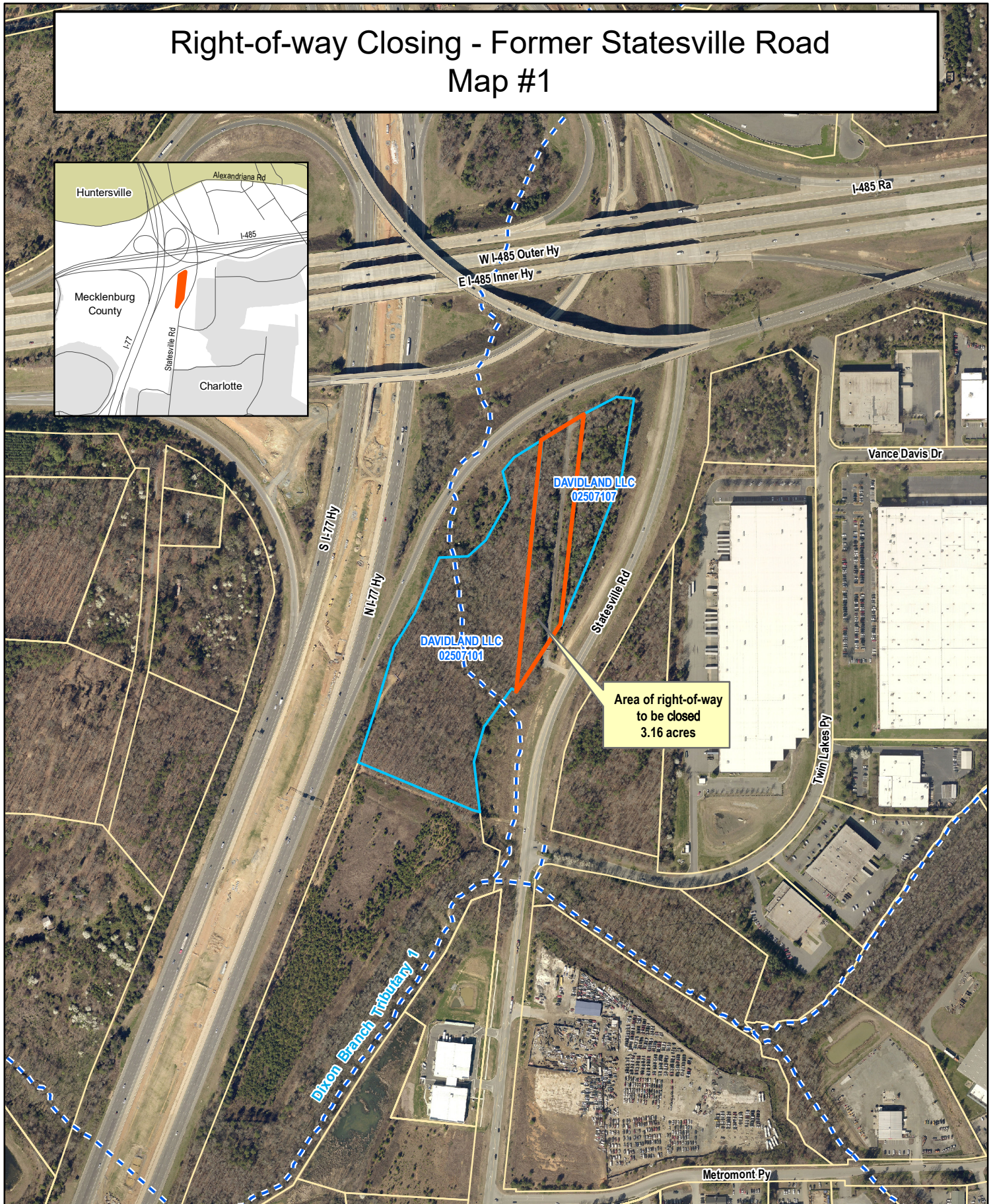
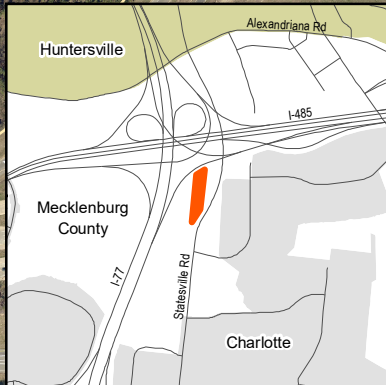


Right-of-way Closing - Former Statesville Road Map #1



Charlotte-Mecklenburg Storm Water Services
PHONE: 311 WEB: stormwater.charmeck.org

0 250 500 Feet



LEGEND

- Subject Properties
- Right-of-way to be closed (3.16 acres)
- Parcel Boundaries

Aerial Photography: March 2018