

EXHIBIT A

I, Seth F. Martin, certify that this map was drawn under my supervision from an actual survey made under my supervision; that the map was prepared for the purpose of the closing of dedicated streets only, and is not intended to be a boundary survey of the property shown.

This 12th day of April, 2018

[Signature]

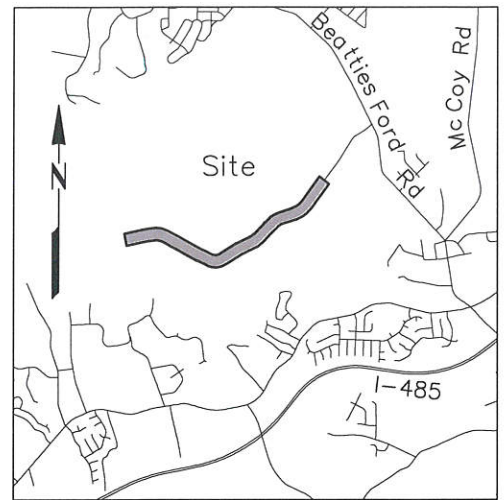
Registration No.: L-4719 NC



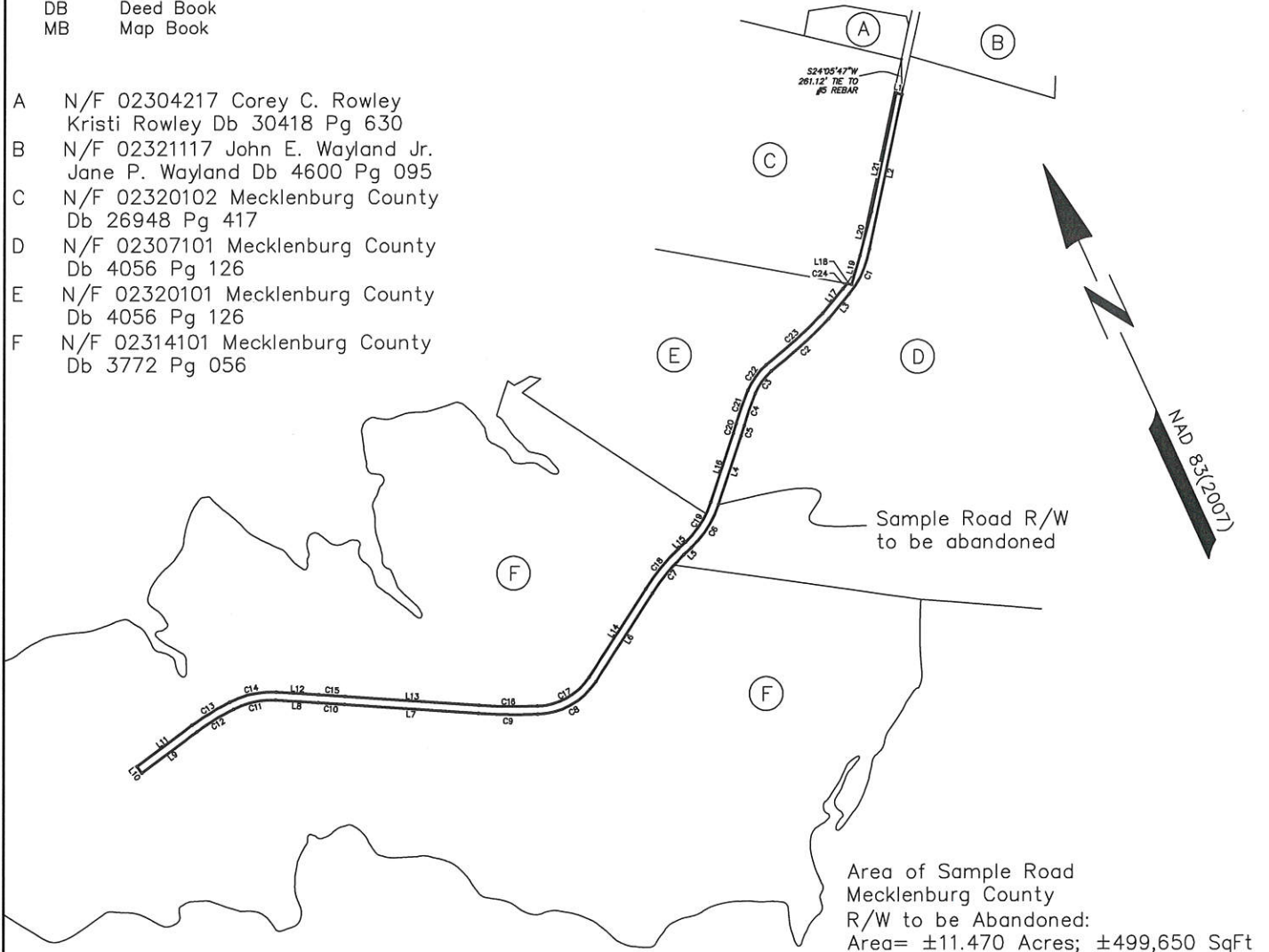
Legend

- EIP Existing Iron Pin
- IPS #5 Rebar Set
- R/W Right-of-Way
- N/F Now or Formerly
- DB Deed Book
- MB Map Book

- A N/F 02304217 Corey C. Rowley
Kristi Rowley Db 30418 Pg 630
- B N/F 02321117 John E. Wayland Jr.
Jane P. Wayland Db 4600 Pg 095
- C N/F 02320102 Mecklenburg County
Db 26948 Pg 417
- D N/F 02307101 Mecklenburg County
Db 4056 Pg 126
- E N/F 02320101 Mecklenburg County
Db 4056 Pg 126
- F N/F 02314101 Mecklenburg County
Db 3772 Pg 056



Vicinity Map - Not to Scale



LDSI

Phone: (704) 337-8329
Fax: (866) 661-1277
508 W 5th St., Suite 125
Charlotte, NC 28202
License No.: C-1925

Exhibit A - Sample Road Abandonment

Town of Huntersville, Mecklenburg County, North Carolina

Current Owners: Mecklenburg County
Deed References: DB 30418 pg 630; MB 50 pg 687

NOT TO SCALE



I, Seth F. Martin, certify that this map was drawn under my supervision from an actual survey made under my supervision; that the map was prepared for the purpose of the closing of dedicated streets only, and is not intended to be a boundary survey of the property shown.

This 12th day of April, 2018

Seth F. Martin
Registration No.: L-4719 NC



- A N/F 02304217 Corey C. Rowley
Kristi Rowley Db 30418 Pg 630
- B N/F 02321117 John E. Wayland Jr.
Jane P. Wayland Db 4600 Pg 095
- C N/F 02320102 Mecklenburg County
Db 26948 Pg 417
- D N/F 02307101 Mecklenburg County
Db 4056 Pg 126
- E N/F 02320101 Mecklenburg County
Db 4056 Pg 126
- F N/F 02314101 Mecklenburg County
Db 3772 Pg 056

S24°05'47"W
261.12' TIE TO
#5 REBAR

Area of Sample Road
Mecklenburg County R/W to be Abandoned:
Area= ±11.470 Acres; ±499,650 SqFt

Easement in favor of Charlotte-Mecklenburg Utilities, Duke Energy, Piedmont Natural Gas, and all other owners of existing underground utilities and telecommunication facilities, upon, under, and across the entire property described above for access to and for the installation, maintenance, replacement, and repair of conduit, cable, wires, water lines, sewer lines, gas mains and related equipment.

Legend

- EIP Existing Iron Pin
- IPS #5 Rebar Set
- R/W Right-of-Way
- N/F Now or Formerly
- DB Deed Book
- MB Map Book

Matchline Sheet 2
Matchline Sheet 3

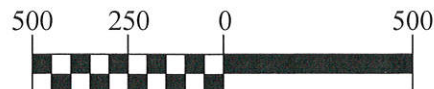
LDSI

Phone: (704) 337-8329
Fax: (866) 661-1277
508 W 5th St., Suite 125
Charlotte, NC 28202
License No.: C-1925

Exhibit A - Sample Road Abandonment

Town of Huntersville, Mecklenburg County, North Carolina

Current Owners: Mecklenburg County
Deed References: DB 30418 pg 630; MB 50 pg 687

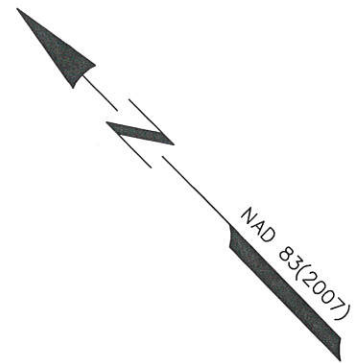


I, Seth F. Martin, certify that this map was drawn under my supervision from an actual survey made under my supervision; that the map was prepared for the purpose of the closing of dedicated streets only, and is not intended to be a boundary survey of the property shown.

This 12th day of April, 2018

Seth F. Martin

Registration No.: L-4719 NC

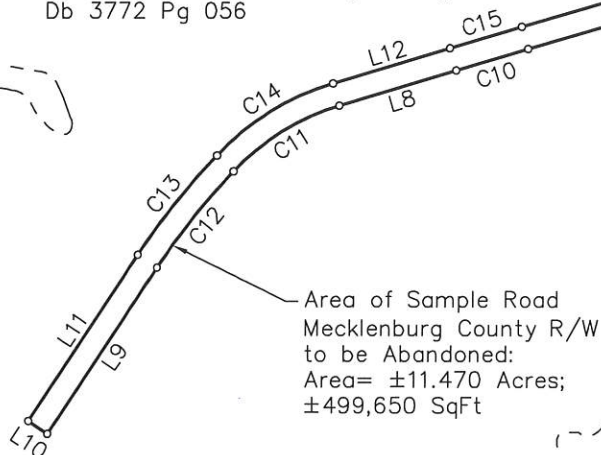


Legend

- EIP Existing Iron Pin
- IPS #5 Rebar Set
- R/W Right-of-Way
- N/F Now or Formerly
- DB Deed Book
- MB Map Book

Matchline Sheet 2
Matchline Sheet 3

- A N/F 02304217 Corey C. Rowley
Kristi Rowley Db 30418 Pg 630
- B N/F 02321117 John E. Wayland Jr.
Jane P. Wayland Db 4600 Pg 095
- C N/F 02320102 Mecklenburg County
Db 26948 Pg 417
- D N/F 02307101 Mecklenburg County
Db 4056 Pg 126
- E N/F 02320101 Mecklenburg County
Db 4056 Pg 126
- F N/F 02314101 Mecklenburg County
Db 3772 Pg 056



Easement in favor of Charlotte-Mecklenburg Utilities, Duke Energy, Piedmont Natural Gas, and all other owners of existing underground utilities and telecommunication facilities, upon, under, and across the entire property described above for access to and for the installation, maintenance, replacement, and repair of conduit, cable, wires, water lines, sewer lines, gas mains and related equipment.

LDSI

Phone: (704) 337-8329
Fax: (866) 661-1277
508 W 5th St., Suite 125
Charlotte, NC 28202
License No.: C-1925

Exhibit A - Sample Road Abandonment

Town of Huntersville, Mecklenburg County, North Carolina

Current Owners: Mecklenburg County
Deed References: DB 30418 pg 630; MB 50 pg 687



I, Seth F. Martin, certify that this map was drawn under my supervision from an actual survey made under my supervision; that the map was prepared for the purpose of the closing of dedicated streets only, and is not intended to be a boundary survey of the property shown.

This 12th day of April, 2018


Registration No.: L-4719 NC



LINE	BEARING	DISTANCE
L1	S52°57'59"E	42.79'
L2	S37°02'01"W	1174.23'
L3	S64°44'43"W	239.62'
L4	S43°09'44"W	537.93'
L5	S71°33'30"W	73.12'
L6	S57°59'14"W	780.70'
L7	N61°09'26"W	1004.05'
L8	N61°43'13"W	318.36'
L9	S78°29'37"W	514.53'
L10	N11°30'23"W	60.00'
L11	N78°29'37"E	514.57'
L12	S61°43'13"E	318.36'
L13	S61°09'26"E	1004.05'
L14	N57°59'14"E	780.25'
L15	N71°33'30"E	73.06'
L16	N43°09'44"E	537.78'
L17	N64°44'43"E	237.61'
L18	S54°51'36"E	36.57'
L19	N40°54'39"E	220.82'
L20	N39°56'02"E	339.05'
L21	N37°02'25"E	901.16'

Easement in favor of Charlotte-Mecklenburg Utilities, Duke Energy, Piedmont Natural Gas, and all other owners of existing underground utilities and telecommunication facilities, upon, under, and across the entire property described above for access to and for the installation, maintenance, replacement, and repair of conduit, cable, wires, water lines, sewer lines, gas mains and related equipment.

CURVE	RADIUS	ARC LENGTH	CHORD LENGTH	CHORD BEARING
C1	703.14'	373.10'	368.74'	S49°32'39"W
C2	3911.53'	580.61'	580.08'	S72°48'12"W
C3	493.02'	207.75'	206.21'	S60°37'52"W
C4	2452.14'	252.34'	252.22'	S44°03'22"W
C5	1321.69'	79.46'	79.45'	S41°08'54"W
C6	767.98'	380.61'	376.73'	S57°21'37"W
C7	1469.56'	372.91'	371.91'	S64°23'53"W
C8	532.16'	519.17'	498.83'	S85°56'10"W
C9	4030.00'	443.81'	443.59'	N64°18'44"W
C10	19970.00'	196.26'	196.26'	N61°26'20"W
C11	617.97'	327.93'	324.10'	N76°55'22"W
C12	1796.64'	319.11'	318.69'	S83°36'58"W
C13	1856.64'	329.33'	328.90'	N83°36'34"E
C14	677.97'	359.33'	355.14'	S76°54'15"E
C15	20030.00'	196.85'	196.85'	S61°26'20"E
C16	3970.00'	437.93'	437.71'	S64°19'03"E
C17	472.16'	461.32'	443.19'	N85°58'40"E
C18	1529.56'	387.63'	386.59'	N64°24'20"E
C19	707.98'	350.88'	347.30'	N57°21'37"E
C20	1261.69'	76.57'	76.56'	N41°07'31"E
C21	2512.14'	260.20'	260.09'	N44°03'18"E
C22	553.02'	236.22'	234.43'	N60°42'36"E
C23	3851.53'	571.93'	571.40'	N72°50'04"E
C24	643.14'	49.88'	49.87'	N62°31'25"E

LDSI

Phone: (704) 337-8329
Fax: (866) 661-1277
508 W 5th St., Suite 125
Charlotte, NC 28202
License No.: C-1925

Exhibit A - Sample Road Abandonment

Town of Huntersville, Mecklenburg County, North Carolina

Current Owners: Mecklenburg County
Deed References: DB 30418 pg 630; MB 50 pg 687

BEGINNING at a calculated point marking the easterly right of way line of Sample Road, having an apparent sixty (60) foot public right of way, and being located South 24 degrees 05 minutes 47 seconds West of an existing #5 rebar marking the intersection of the westerly right of way of Sample Road and the northerly property line of Mecklenburg County (now or formerly) as described in Deed Book 4056, page 126 of the Mecklenburg County Register of Deeds; THENCE with the apparent right of way of Sample Road the following forty (40) courses and distances: 1) South 37 degrees 02 minutes 01 seconds West a distance of 1174.23 feet; 2) THENCE along a curve to the right having an arc length of 373.10 feet, and a radius of 703.14 feet, being subtended by a chord bearing of South 49 degrees 32 minutes 39 seconds West, a distance of 368.74 feet to a calculated point; 3) THENCE South 64 degrees 44 minutes 43 seconds West a distance of 239.62 feet; 4) THENCE along a curve to the right having an arc length of 580.61 feet, and a radius of 3911.53 feet, being subtended by a chord bearing of South 72 degrees 48 minutes 12 seconds West, a distance of 580.08 feet to a calculated point; 5) THENCE with a reverse curve to the left having an arc length of 207.75 feet, and a radius of 493.02 feet, being subtended by a chord bearing of South 60 degrees 37 minutes 52 seconds West, a distance of 206.21 feet to a calculated point; 6) THENCE with a compound curve to the left having an arc length of 252.34 feet, and a radius of 2452.14 feet, being subtended by a chord bearing of South 44 degrees 03 minutes 22 seconds West, a distance of 252.22 feet to a calculated point; 7) THENCE with a reverse curve to the right having an arc length of 79.46 feet, and a radius of 1321.69 feet, being subtended by a chord bearing of South 41 degrees 08 minutes 54 seconds West, a distance of 79.45 feet to a calculated point; 8) THENCE South 43 degrees 09 minutes 44 seconds West a distance of 537.93 feet; 9) THENCE along a curve to the right having an arc length of 380.61 feet, and a radius of 767.98 feet, being subtended by a chord bearing of South 57 degrees 21 minutes 37 seconds West, a distance of 376.73 feet to a calculated point; 10) THENCE South 71 degrees 33 minutes 30 seconds West a distance of 73.12 feet; 11) THENCE along a curve to the left having an arc length of 372.91 feet, and a radius of 1469.56 feet, being subtended by a chord bearing of South 64 degrees 23 minutes 53 seconds West, a distance of 371.91 feet to a calculated point; 12) THENCE South 57 degrees 59 minutes 14 seconds West a distance of 780.70 feet; 13) THENCE along a curve to the right having an arc length of 519.17 feet, and a radius of 532.16 feet, being subtended by a chord bearing of South 85 degrees 56 minutes 10 seconds West, a distance of 498.83 feet to a calculated point; 14) THENCE with a compound curve to the right having an arc length of 443.81 feet, and a radius of 4030.00 feet, being subtended by a chord bearing of North 64 degrees 18 minutes 44 seconds West, a distance of 443.59 feet to a calculated point; 15) THENCE North 61 degrees 09 minutes 26 seconds West a distance of 1004.05 feet; 16) THENCE along a curve to the left having an arc length of 196.26 feet, and a radius of 19970.00 feet, being subtended by a chord bearing of North 61 degrees 26 minutes 20 seconds West, a distance of 196.26 feet to a calculated point; 17) THENCE North 61 degrees 43 minutes 13 seconds West a distance of 318.36 feet; 18) THENCE along a curve to the left having an arc length of 327.93 feet, and a radius of 617.97 feet, being subtended by a chord bearing of North 76 degrees 55 minutes 22 seconds West, a distance of 324.10 feet to a calculated point; 19) THENCE with a compound curve to the left having an arc length of 319.11 feet, and a radius of 1796.64 feet, being subtended by a chord bearing of South 83 degrees 36 minutes 58 seconds West, a distance of 318.69 feet to a calculated point; 20) THENCE South 78 degrees 29 minutes 37 seconds West a distance of 514.53 feet; 21) THENCE North 11 degrees 30 minutes 23 seconds West a distance of 60.00 feet; 22) THENCE North 78 degrees 29 minutes 37 seconds East a distance of 514.57 feet; 23) THENCE along a curve to the right having an arc length of 329.33 feet, and a radius of 1856.64 feet, being subtended by a chord bearing of North 83 degrees 36 minutes 34 seconds East, a distance of 328.90 feet

to a calculated point; 24) THENCE with a compound curve to the right having an arc length of 359.33 feet, and a radius of 677.97 feet, being subtended by a chord bearing of South 76 degrees 54 minutes 15 seconds East, a distance of 355.14 feet to a calculated point; 25) THENCE South 61 degrees 43 minutes 13 seconds East a distance of 318.36 feet; 26) THENCE along a curve to the right having an arc length of 196.85 feet, and a radius of 20030.00 feet, being subtended by a chord bearing of South 61 degrees 26 minutes 20 seconds East, a distance of 196.85 feet to a calculated point; 27) THENCE South 61 degrees 09 minutes 26 seconds East a distance of 1004.05 feet; 28) THENCE along a curve to the left having an arc length of 437.93 feet, and a radius of 3970.00 feet, being subtended by a chord bearing of South 64 degrees 19 minutes 03 seconds East, a distance of 437.71 feet to a calculated point; 29) THENCE with a compound curve to the left having an arc length of 461.32 feet, and a radius of 472.16 feet, being subtended by a chord bearing of North 85 degrees 58 minutes 40 seconds East, a distance of 443.19 feet to a calculated point; 30) THENCE North 57 degrees 59 minutes 14 seconds East a distance of 780.25 feet; 31) THENCE along a curve to the right having an arc length of 387.63 feet, and a radius of 1529.56 feet, being subtended by a chord bearing of North 64 degrees 24 minutes 20 seconds East, a distance of 386.59 feet to a calculated point; 32) THENCE North 71 degrees 33 minutes 30 seconds East a distance of 73.06 feet; 33) THENCE along a curve to the left having an arc length of 350.88 feet, and a radius of 707.98 feet, being subtended by a chord bearing of North 57 degrees 21 minutes 37 seconds East, a distance of 347.30 feet to a calculated point; 34) THENCE North 43 degrees 09 minutes 44 seconds East a distance of 537.78 feet; 35) THENCE along a curve to the left having an arc length of 76.57 feet, and a radius of 1261.69 feet, being subtended by a chord bearing of North 41 degrees 07 minutes 31 seconds East, a distance of 76.56 feet to a calculated point; 36) THENCE with a reverse curve to the right having an arc length of 260.20 feet, and a radius of 2512.14 feet, being subtended by a chord bearing of North 44 degrees 03 minutes 18 seconds East, a distance of 260.09 feet to a calculated point; 37) THENCE with a compound curve to the right having an arc length of 236.22 feet, and a radius of 553.02 feet, being subtended by a chord bearing of North 60 degrees 42 minutes 36 seconds East, a distance of 234.43 feet to a calculated point; 38) THENCE with a reverse curve to the left having an arc length of 571.93 feet, and a radius of 3851.53 feet, being subtended by a chord bearing of North 72 degrees 50 minutes 04 seconds East, a distance of 571.40 feet to a calculated point; 39) THENCE North 64 degrees 44 minutes 43 seconds East a distance of 237.61 feet; 40) THENCE along a curve to the left having an arc length of 49.88 feet, and a radius of 643.14 feet, being subtended by a chord bearing of North 62 degrees 31 minutes 25 seconds East, a distance of 49.87 feet to a calculated point; THENCE leaving the apparent right of way of Sample Road and with the lines of Mecklenburg County, as described in Deed Book 26948, page 417, the following four courses and distances: 1) South 54 degrees 51 minutes 36 seconds East a distance of 36.57 feet; 2) THENCE North 40 degrees 54 minutes 39 seconds East a distance of 220.82 feet; 3) THENCE North 39 degrees 56 minutes 02 seconds East a distance of 339.05 feet; 4) THENCE North 37 degrees 02 minutes 25 seconds East a distance of 901.16 feet; THENCE with a new line South 52 degrees 57 minutes 59 seconds East a distance of 42.79 feet to the POINT OF BEGINNING, having an area of 11.470 Acres, more or less.