



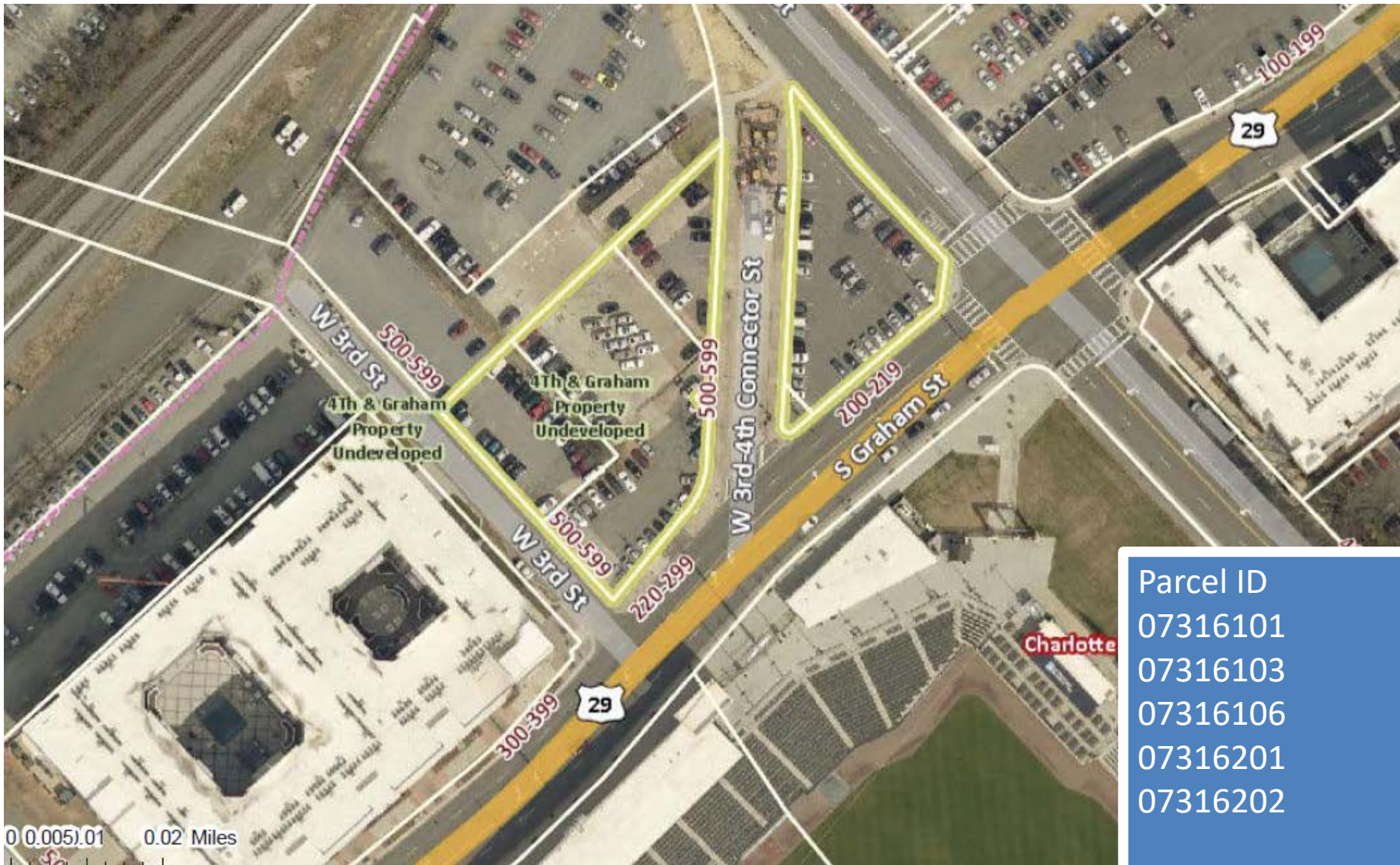
Center City Real Estate Update

Board of County Commissioners

Staff Briefing

February 6, 2018

Parcels



Parcel ID	AC
07316101	.174
07316103	.434
07316106	.129
07316201	.327
07316202	.009
TOTAL	1.073



Opportunity

- Sale price determined by appraisal
 - \$6.78MM in 2017
 - No discount
 - No public participation sought
- Private entity would build mixed-income/mixed-use development
 - 20 senior housing units affordable to 60% AMI
 - 20 family housing units affordable to 60% AMI
 - 40 market rate for-sale family units
 - 100 public parking spaces
 - 3500 sf retail wrap along South Graham St

