



Charlotte-Mecklenburg Coalition for Housing Update

Presented to Mecklenburg Board
of County Commissioners

April 22, 2014

Presentation Overview

- Receive an update on progress to date on homelessness, the Housing Stability Partnership and the Charlotte Mecklenburg Coalition for Housing.
- No BOCC action requested at this time.



Point-In-Time (“PIT”) Count



Total (January 2014)

- **2,014** homeless persons
- A **19% decrease** from 2009

Individuals

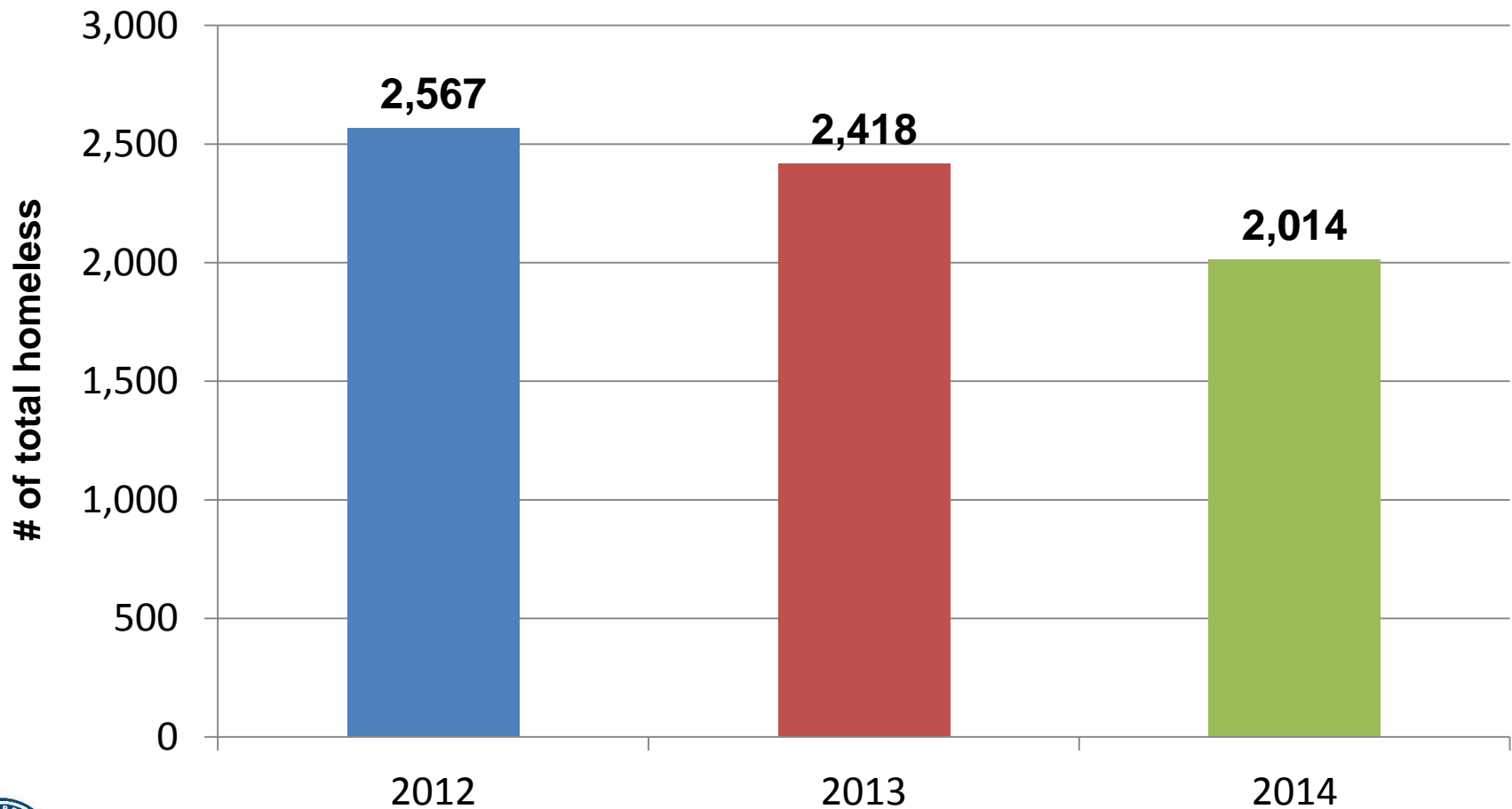
- **1,185** people were homeless as individuals, representing about **59%** of all homeless people on a single night
- A **40% decrease** from 2009

Families

- **820** homeless people in **280** families, representing **41%** of all homeless population on a single night
- A **57% increase** from 2009



PIT Count Trend



Homelessness Summary



Overall, total homelessness is **decreasing** in our community.



Homeless individual trend is decreasing.



Homeless families trend is increasing.



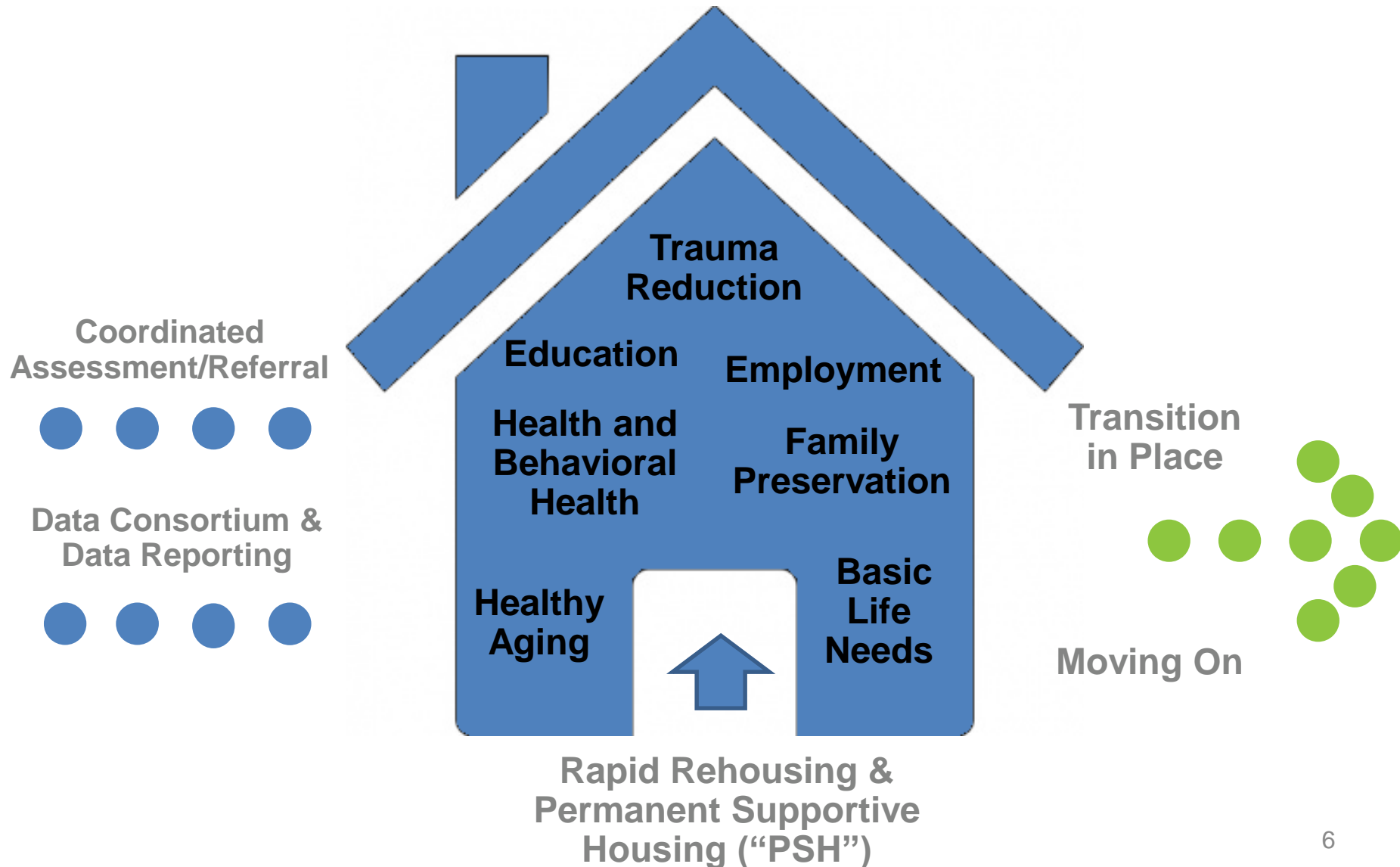
Chronically homeless trend is decreasing.



Homeless children trend is increasing.



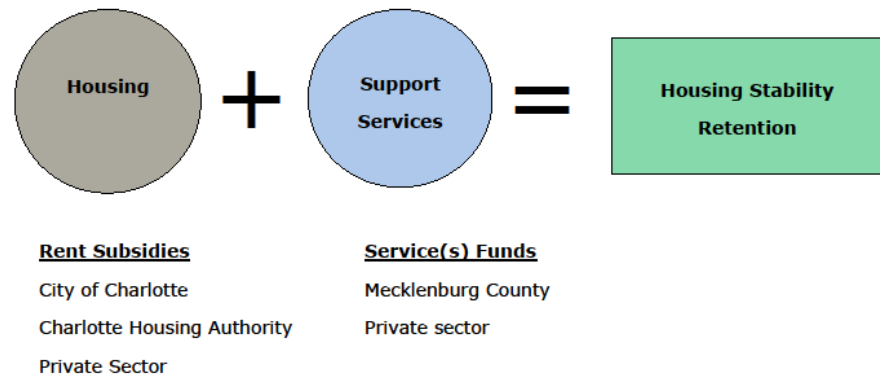
Rapid Rehousing & Permanent Supportive Housing



Housing Stability Partnership

- 5 year roll-out, multi-year contracts
 - FY14 = \$1,362,500
 - FY15 = \$2,362,500
 - FY16 = \$2,877,500
 - FY17 = \$2,720,000
 - FY18 = \$2,737,000

Concept Design & Formula



FY14 Housing Stability Partnership RFP

- \$1,362,500 available for supportive services (County) linked to permanent housing.
- Received 10 applicants.
 - \$3,348,082.30 requested in supportive services.
- Award decision in May.



Charlotte-Mecklenburg Coalition for Housing

Purpose and Goals

1. Housing
2. Outreach and Engagement
3. Prevention

Governance



2014 CMCH Strategic Plan

System Goals	Build and sustain community capacity to successfully end and prevent homelessness	Homeless families and individuals will be housed quickly utilizing a rapid rehousing model	Outreach will link chronically homeless individuals and families to housing & services	Services will stabilize housing and optimize self-sufficiency	Families and individuals most at-risk of becoming homeless will remain stably housed	Promote access to an effective use of mainstream programs
---------------------	---	--	--	---	--	---

System Outcomes	Reduce number of people who <u>become</u> homeless	Reduce the number of people who <u>return</u> to homelessness	Reduce the length of homelessness for individuals and families	Increase availability of housing (supply and increased access through subsidy)	Increase community capacity to effectively address homelessness and housing stability
------------------------	--	---	--	--	---

Community Engagement & Advocacy Committee	
Key actions for CMCH work plan	Indicators of Success
<ul style="list-style-type: none"> Create community engagement activities with Greater Charlotte Apartment Association & Charlotte Regional Realtor Association Create plan for a Business Summit on workforce/affordable housing Communicate Coalition's activities & successes 	<ul style="list-style-type: none"> Rental units available for endowment program as well as units to address on-going needs Continued community buy-in and reduced neighborhood NIMBYism
Research & Evaluation Committee	
Key actions for CMCH work plan	Indicators of Success
<ul style="list-style-type: none"> Partner with Continuum of Care to develop program and system performance standards Continued development of data consortium Develop reporting criteria Identify need & explore grant opportunities 	<ul style="list-style-type: none"> Lengths of shelter stays reduced Reduced numbers of homeless individuals & families System-wide reporting on affordable housing & homelessness Increase in resources for program activities

Federal Changes Impact CMCH

- HEARTH Act
- Continuum of Care Program (“CoC”)
- Coordinated Intake & Assessment



HUD Recommended Governance Board

CMCH Representation

- Affordable Housing (City Council)
- Community (City Council)
- Corporate/Economic Development (Mayor)
- Donor/Philanthropic (City Council)
- Education (County)
- Faith-Based (Mayor)
- Financial (City Council)
- Human Services (County)
- Legal (City Council)
- Non-Profit (Mayor)
- Public Safety (County)
- Real Estate (City Council)
- City of Charlotte*
- Mecklenburg County*
- Charlotte Housing Authority*

*Ex-Officio

CoC Representation

- ✓ Nonprofit homelessness assistance provider
- ✓ Victim services provider
- ✓ Faith-based organizations
- ✓ Governments
- ✓ Businesses
- ✓ Advocates
- ✓ Public housing agencies
- School Districts
- ✓ Social Service Providers
- ✓ Mental Health agencies
- Hospitals
- ✓ Universities
- ✓ Affordable Housing Developers
- ✓ Law Enforcement
- Veterans organizations
- Homeless or formerly homeless individuals



Recommended CMCH Expansion and Revised Scope

- Four additional appointments
 - Hospital and homeless or formerly homeless individual
 - School District & Veterans Organization
- CMCH will serve as the governing body for the CoC Program.



FY15 Considerations

1. Expand membership on CMCH (four new appointments).
2. Consider an FY15 increase of \$1,000,000 for supportive services for Housing Stability Partnership.
3. Consider FY15 funding of \$50,000 for Data Consortium Reports (Urban Institute).



Contact Information

Ken Szymanski, Executive Director
Greater Charlotte Apartment Association &
Apartment Associate of North Carolina
ken@greatercaa.org

Stacy M. Lowry, Director
Community Support Services
Stacy.Lowry@MecklenburgCountyNC.gov

