

# Primary Health - Care of Charlotte, P.A.®



Email: [1betty.marlin@gmail.com](mailto:1betty.marlin@gmail.com)

## Services provided:

Wellness health assesment	\$60
Partial assessment	\$40
Self-Care counseling/Nursing	\$40
Consultation/Wellness Nook	\$160
Health Education Classes	\$160
Visits to home/Office etc	\$100
Teen health wellness bar	\$20
Diabetic/Heart kitchen	\$20
Referrals/Advanced Practice Nurse	\$10

## PRIMARY TESTS: \$40 each

Blood Sugar

Total Cholesterol

Urinalysis

Tuberculin Purified Protein (TB) ~~\$40~~ \$60

## Community Service:

- ❖ Live Radio Boardcast [www.wdrbmedia.com](http://www.wdrbmedia.com)  
Tuesday@ 12:00 pm - Live on Youtube
  - ❖ Fri. TV Show: 7:30-8:00pm on Cable 21  
"Wellness, Wholeness, Holiness"
  - ❖ Free Care: 3rd Fridays 3:00-6:00pm by  
B.E. Marlin RN, BSN, MSN, CNS, SANE
- PHCC 508 Beatties Ford Rd, Charlotte NC, 28216
- Phone (704)347-1172**
- <https://www.getwellnesscare.com>**
- "The Value of Health Care You Can Live With"
- Psalms 112*

# Primary Health - Care of Charlotte, P.A.®

508 Beatties Ford Rd (at J.C. Smith exit)

Charlotte NC 28216

704-347-1172

<https://www.getwellnesscare.com>

## Advanced Practice Nurse

*"I wish above all things that you may prosper and be in health, even as your soul prospers." 3 John 1:2*

**Purpose to:** Give God the healing glory  
Promote wellness  
Prevent disease  
Enhance job performance  
Provide affordable health care for all  
Reduce complications of illness  
Provide clinical site for advanced practice nursing students

**Through:** Physical assessment/early detection  
Self-Care Counseling  
Referral  
First Aid  
Wellness Health Education  
Primary Diagnostic Test

**Based on:** Nursing Diagnosis/Self Care Plan

**Motto:** Appropriate **Self-Care**  
Promotes **Wellness**

## Health care is given:

Based on reliable health research

Within 15-20 minutes of arrival

For special needs or changing needs

By a **Parent/Child Clinical Nurse Specialist**

& **Sexual Assault Nurse**

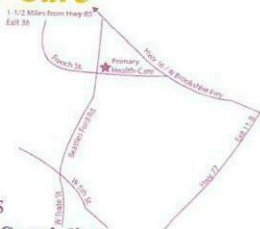
In a Christian family atmosphere

On your way to or from work

Charged for only services given plus supplies

On bus line #7

For you to file for refund/insurance provider



**Walk-in Tues-Fri 7am-5:30pm**

**To Be Blessed**

**"The Value of Health Care You Can Live With"**

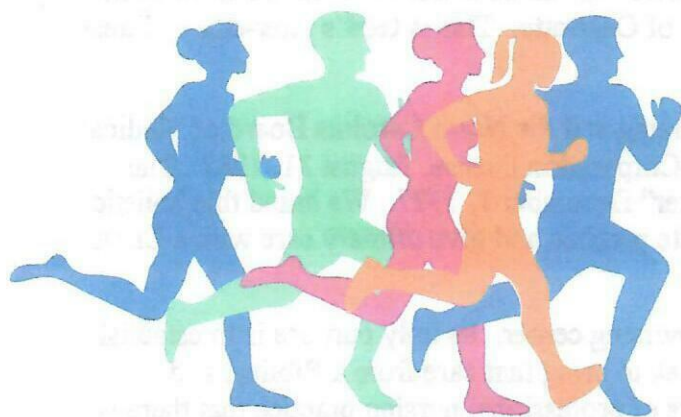


**WELLNESS  
WHOLENESS  
HOLINESS 501C**

**CHARITY EVENT FOR**

## **TEEN WELLNESS NOOK & DIABETIC HEART KITCHEN**

**HOSTED BY: PRIMARY HEALTH  
CARE OF CHARLOTTE**



**Come join us for 1 mi  
\$10, 2 mi \$20, 3 mi \$30**

## **HISTORIC- WEST END WALK**

**Gear up for our annual  
Historic- West End walk**

**More Info**



**SATURDAY**

**► MARCH 22ND**

**10AM - 12PM**



Website:  
**(704) 975-3850**



Location:  
**508 Beatties Ford Rd**



**PRIMARY HEALTH-CARE OF CHARLOTTE, P.A.**  
**BETTY ELIZABETH J. MARLIN, RN, BSN, MSN, CNS**  
**508 BEATTIES FORD RD., CHARLOTTE, NC 28216-5334**

**PHONE: (704) 347-1172**

*Blessed is the man who fears the Lord, who finds great delight in His commands. Psalms 112:1*

**Dear Brothers and Sisters in Christ,**

Allow me to introduce myself as a co-laborer of Jesus Christ. My name is Beth Marlin, a Parent/Child Clinical Nurse Specialist. I operate Primary Health-Care of Charlotte. This is God's inter-city wellness center for the unserved and underserved.

After being approved by the North Carolina Board of Nursing and the North Carolina Board of Medical Examiners for a state business license, we received an S-Corporation license, August 31, 1987. The Lord opened the first walk-in "Community Nursing Center" December 1, 1987. We based this holistic practice on HR-1161 encouraging nurses to go into private practice and give primary care with a CLIA waiver.

The Great Physician, Jesus Christ, opened this wellness-nursing center. Its holy purpose is to establish low cost primary care (first contact wellness care) and seek to bring that care from a Biblical and spiritual base. We knew from valid research and 38 years of professional nursing practice that there is such a desperate need for physicals, first aid, self-care counseling, health education for disease prevention, and abuse intervention.

We stay in business entirely by the provision of our Lord. We give God all the glory, honor and praise for promoting, healing, delivering wellness and releasing drug use and abuse for greater than 13,500 clients and their precious families through our care. We stand willing to help you with primary nursing care, wellness education, and spiritual aid either in our office or at your location of need.

We help thousands weekly with cable television (CMPAC) access program (channel 21, Fridays at 7:30 PM) called "Wellness, Wholeness, Holiness." We also have written articles for the Agape Christian Newspaper and also host a weekly radio program (WDRB) on \_\_\_\_\_ days at \_\_\_\_\_. We have improved individual and community wellness with health fairs and seminars.

We believe that the Lord is going to cause us to expand this nursing practice to reach every kindred, tribe and nation by the year 2040 (our call for expert nursing care that I offer will help that expansion to take place. You can also help by volunteering or giving a deductible contribution to the Diabetic Heart Kitchen and Teen Wellness Nook (Wellness, Wholeness, Holiness, Inc.). The end result is to see many come to the Lord and help prepare them to be pure and spotless for His coming return.

It is our desire to provide gentle and loving wellness care to as many souls as possible. God's word says, "Beloved, I pray above all things that thou may prosper and be in good health even as thy soul prospereth." (III John 2) This is our prayer for you and those who belong to you.

May we be of service to you?

*Betty E. J. Marlin, RN, BSN, MSN, CNS, FNE, OM*

**Walk in Tuesday-Friday, 7am until 5:30 pm  
Quality First Aid, Physicals and Care  
Just North of JC Smith University**