



Annual Report 2024

Mecklenburg County Park and
Recreation Commission

November 19, 2024

Menu of Annual Report

- Economic Development Review
- Importance of Funding Land Acquisitions
- Fix what is broken first/Reinvestment
- Encourage additional funding of operations at Park and Rec (Operational Needs Assessment)
- Encourage more balance in the types of projects for funding of CIP 2030
- Encourage additional programming for seniors, children, therapeutic and inclusive recreation
- Accelerate Master Plan Revision
- Identify projects that have been funded in the CIP
- CIP 2030 possibilities
- Projects on wish list from residents:
 - I.e. swimming pools, regional recreation centers, community regional recreation centers, and new parks



Economic Development

Investments made to local parks, facilities, nature preserves and greenways not only raise the standard of living in our neighborhoods but also spark activity that can ripple throughout the economy of Mecklenburg County.

To that statement the bottom line is that our parks, facilities, nature preserves and greenways are a smart financial investment for our community.

Unlike similar sized NC counties that receive funding from State and Federal entities for parks, Mecklenburg County's investment is funded entirely by the BOCC.





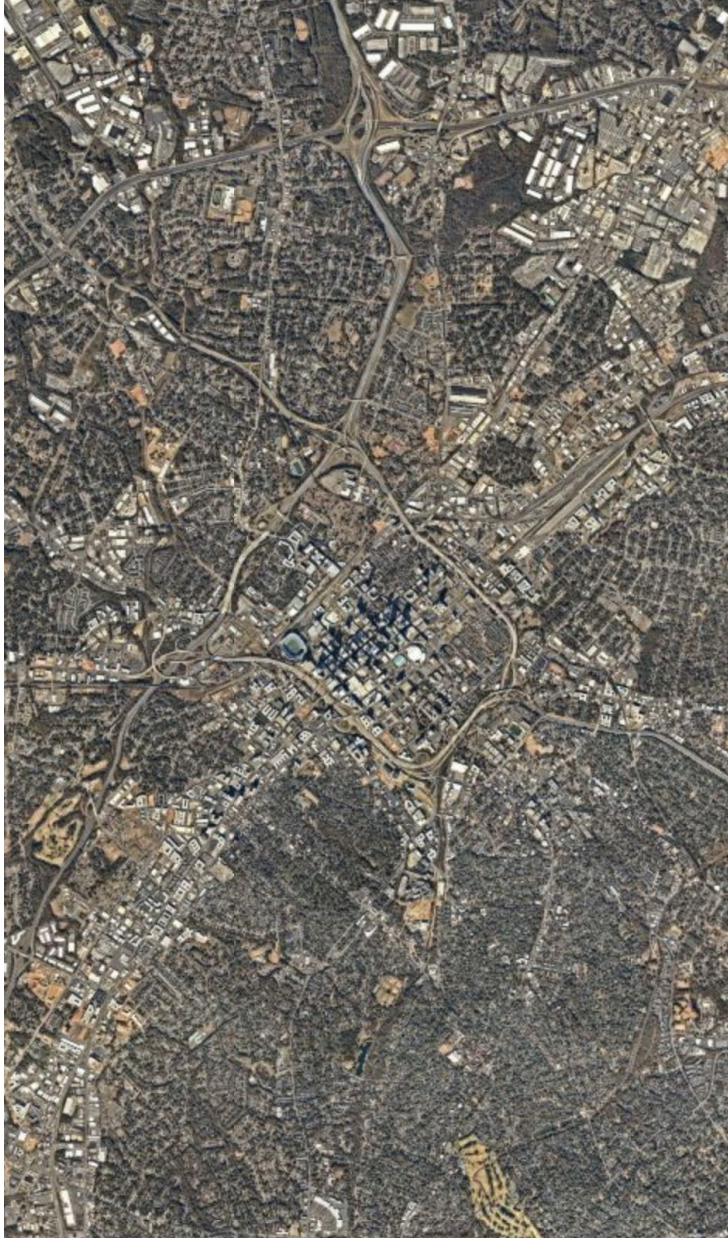
Land Acquisition

Land acquisition is extremely important as land is rapidly disappearing. The PRC believes that the funds allocated to Land Acquisition is a monumental step towards funding our parks and recreation system. The PRC applauds and appreciates this funding decision by the BOCC.

It is critical that the Land Acquisition Team is sufficiently resourced and staffed. The competition for land is significant. The county must be able to capitalize on purchase opportunities when they present themselves.

The BOCC's Environmental Leadership Action Plan (ELAP) guides the activities of County Government and includes the following:

Acquire land for recreation, ecosystem preservation, recycling, storm water management and to protect the quality of life in our community.



Fix What Is Broken First

On several occasions the PRC has communicated to you our consensus opinion that the BOCC should first insist on **REPAIR**, **REPLACEMENT**, and **REINVESTMENT** in greenways, parks, and facilities before authorizing spending and investments in new projects.

This is the priority of the PRC.



Balance in Project Funding

The PRC supports the policy of a balance in types of projects funded in the CIP.

There is also a consensus on the PRC that limited progress has been made for new parks and facilities in the underserved areas.

In other words, **PARK DESERTS** remain.

Everyone deserves a great park.



Additional Analysis of Operational Needs Assessment for Projects

It has come to the attention of the PRC that Park & Rec is insufficiently staffed and as such, new projects coming online may not have been provided with adequate staff.

In addition, the Park and Recreation Department has not recovered from the reduction in workforce that occurred after the Great Recession.

We advise the BOCC to encourage an analysis of a bottoms up unconstrained operational needs assessment.



Additional Programming for Therapeutic and Inclusive Recreation

The PRC encourages the BOCC to investigate the needs for additional funding for Therapeutic and Inclusive Recreation.

We advise the BOCC to request an assessment from staff.

The Park and Recreation Master Plan Revision Needs to Be Addressed Now

The Park and Recreation's Master Plan, known as the Meck Playbook, is undergoing its scheduled update in 2025 and 2026.

The PRC has formed a subcommittee to give P&R staff active assistance in this update effort.

The PRC's goal is to make sure that, in our liaison role, we can urge the public to participate in this update process and bring as many voices to bear as possible so that the final product is as representative of the County's priorities as possible.

We also want to make sure that the update highlights the immense progress P&R has already made towards the goals established in the Meck Playbook and shines a light on the outstanding items to underpin future budget requests.

We urge the members of the BOCC to encourage their constituents to participate and participate themselves in this update process.

Please let the PRC know if you'd like more information on what this participation would look like.

Wish List Requests from Mecklenburg County Residents

- Bring all existing parks to Good or Excellent Condition
- Additional Community Recreation Centers (5 to 7 needed)
- Additional Regional Recreation Centers (2 more were originally proposed)
- Nature Preserve Completion
- New County Swimming Pools (Indoor and Outdoor)
- Greenway and Trails Completion
- Additional Parks in Underserved Areas
- Additional Sportsplexes
- Meck Aquatic Center Addition
- Grady Cole Center Replacement
- Additional Children's Athletic Fields
- Indoor Running Track
- Land Acquisition \$50 Million per year



FY 24-29 Park and Recreation Capital Improvement Plan

		Total Funding
FY 2024		
Beaty Park - Davidson		\$1,211,014
Dredgling- Park Road Park and Freedom Park		\$4,685,461
Eastfield Park		\$3,705,104
Eastland Park		\$12,345,688
Ezell Park		\$4,940,143
Latta Place		\$11,238,547
New Elementary School Recreation Center		\$7,311,127
Pressley Road Park		\$3,109,307
Sugar Creek Greenway- Yorkmont Road to McDowell Farms Drive		\$14,591,007
Wallace Pruitt Recreation Center		\$3,690,729

\$66,828,127

FY 2025		
Annual Land Purchases		\$11,408,249
Berryhill Nature Preserve		\$2,916,006
Briar Creek Greenway - Central Avenue to Monroe Road		\$11,327,249
Bryant Park		\$9,652,755
Dog Parks		\$1,656,972
McDowell Creek Greenway - Gilead Rd to Beatties Ford Rd/Pamela St		\$19,085,860
Pickleball Courts		\$18,877,537
Ribbonwalk Nature Center		\$11,781,066
Rozzelles Ferry Nature Preserve		\$7,457,332
Skate Parks		\$6,875,719
Spray Grounds		\$7,593,218

\$108,631,963

FY 2026		
Annual Land Purchases		\$11,828,249
Grier Heights Park		\$7,369,511
Martin Luther King Jr. Park		\$10,572,339
McAlpine Creek Greenway- Johnston Road to Carmel Road		\$9,732,981
McMullen Creek Gwy- Hwy 51 to McAlpine Creek Gwy/Carmel Rd		\$5,048,323
Park Access Improvement		\$17,690,329
South Prong Clarke Creek Greenway - N Church St to Asbury Chapel Rd		\$14,507,178
Tuckasegee Park and Recreation Center		\$35,774,444

\$112,523,354

FY 2027		
Annual Land Purchases		\$12,248,250
Albemarle Road Recreation Center		\$22,768,163
Four Mile Creek Greenway- Bevington Place to Johnston Road		\$13,624,960
Mallard Creek Greenway - Mallard Creek Drive to David Taylor Drive		\$11,044,980
Oakhurst Park		\$2,493,152
Wilmore (Spruce Street) Park		\$893,357

\$63,072,862

FY 2028		
Annual Land Purchases		\$12,668,517
Campbell Creek Greenway- Campbell Creek Park to Campbell Creek Greenway		\$26,276,924
Irwins Creek Greenway- Lakeview Circle to McAlpine Creek Greenway		\$16,928,248
McDowell Nature Center and Nature Preserve		\$21,872,190
Torrence Creek Greenway - Cedar River Road to McDowell Creek Greenway		\$8,238,123

\$85,984,002

FY 2029		
Campbell Creek Park		\$5,001,243
Derita Park		\$4,690,228
Irwin Creek Greenway- Clanton Road to Crestridge		\$10,173,675
Irwin Creek Gway- Crestridge Drive to Yorkmont Road		\$8,658,168
Julian Underwood Park		\$2,865,859
Little Sugar Creek Greenway - Parkwood Underpass		\$267,446
McDowell Creek Gway - Catawba Ave (Smithville Park) to Westmoreland Rd		\$14,149,445
Springfield Park		\$6,718,522
Sugar Creek Greenway- Mounting Rock Road to Arrowood Road- Design Only		\$4,121,093
Wayfinding		\$832,233
Yorkmont Park		\$2,545,174

\$60,023,086

Grand Total \$497,063,394

FY 24-29 Park and Recreation Capital Improvement Plan

CIP 2030 Possibilities

Original Ranking	Project Description	Project Type
39	Irwin Creek (Hamilton to Ray's Splash Planet	Greenway
41	McAlpine Creek Greenway (Providence Rd to Colony Rd	Greenway
45	Back Creek	Greenway
46	Camp Greene Park	Trails and Park
55	Oak Hills Park	Park
44	East Charlotte	Park (Partners for Parks)
60	Cullman Avenue Park	Park
40	Stewart Creek Tributary	Greenway
70	Bradford Park	Park
78	Harrisburg Sportsplex	Park
27	CMS Middle School Athletic Facilities	Fields

220

ATHLETIC FIELDS



103 BASKETBALL COURTS



133 TENNIS COURTS



41 VOLLEYBALL COURTS



3 SKATE PARKS



10 INDOOR FITNESS AREAS



28 GYMNASIUMS

MECKLENBURG COUNTY
— SINCE 1974 —

PARK AND RECREATION

WE HAVE OVER

22,500

ACRES OF PARKLAND



Mecklenburg County
Park and Recreation

430+

MILES OF TRAILS & GREENWAYS



13 DISC GOLF COURSES



55 PICKLEBALL COURTS



6 GOLF FACILITIES



5 NATURE CENTERS



29 RECREATION CENTERS

FACILITIES AND EXPERIENCES

131

PLAYGROUNDS



21 COMMUNITY GARDENS



48 HISTORIC SITES

290+

PARK PROPERTIES



14 FISHING PIERS

9 SPRAY GROUNDS

5 BOAT LAUNCH AREAS

11 POOLS

100

PICNIC SHELTERS & INDOOR PAVILIONS



10 DOG PARKS



13 MILES OF HORSEBACK RIDING TRAILS

UNIQUE FACILITIES



HORNET'S NEST
BMX BIKE TRACK



DAVID B. WAYMER
MODEL AIRPLANE
FLYING FIELD



GRADY COLE CENTER &
AMERICAN LEGION
MEMORIAL STADIUM



ST. MARY'S
CHAPEL



REVOLUTION PARK
SPORTS ACADEMY
BOXING AREA



MECKLENBURG
COUNTY AQUATIC
CENTER



RAMSEY
CREEK
BEACH



MCDOWELL
CAMPGROUND



RAY'S
SPLASH PLANET

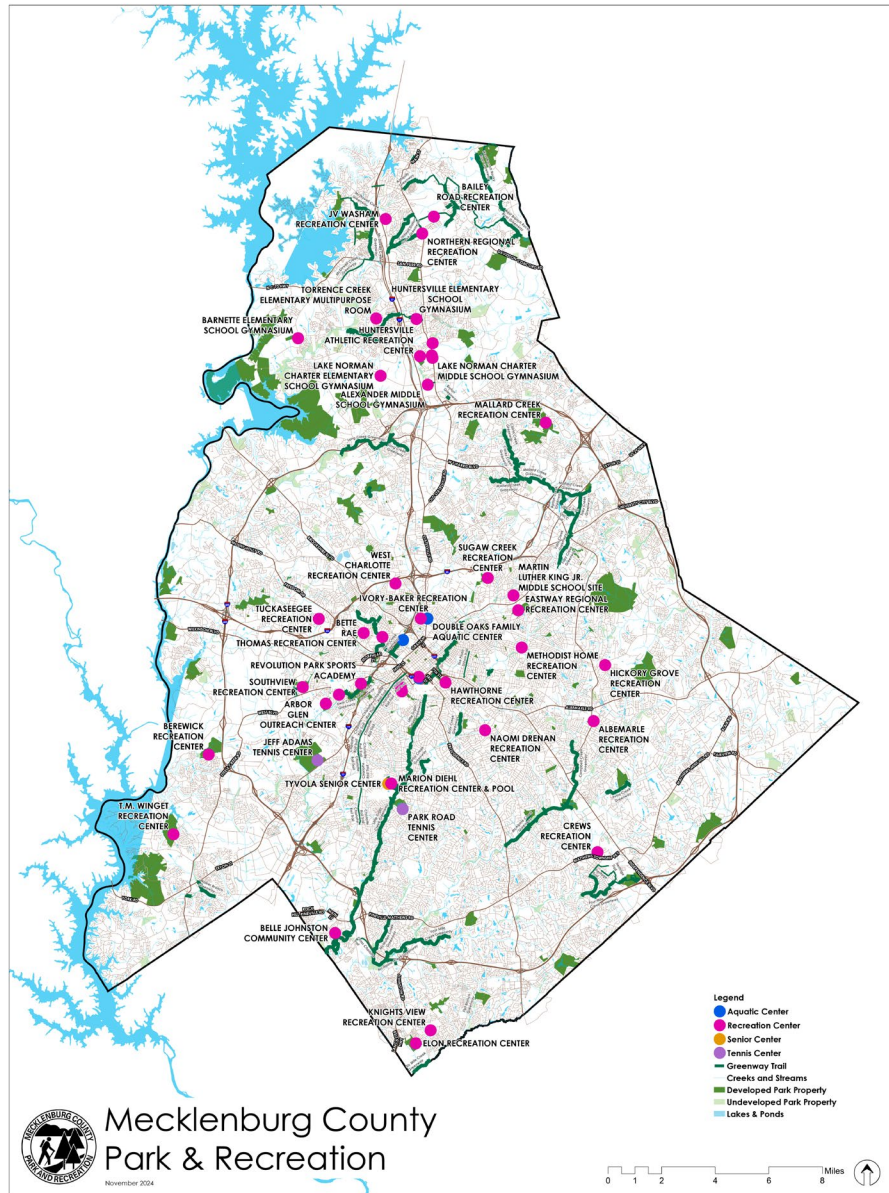
FIND OUT MORE

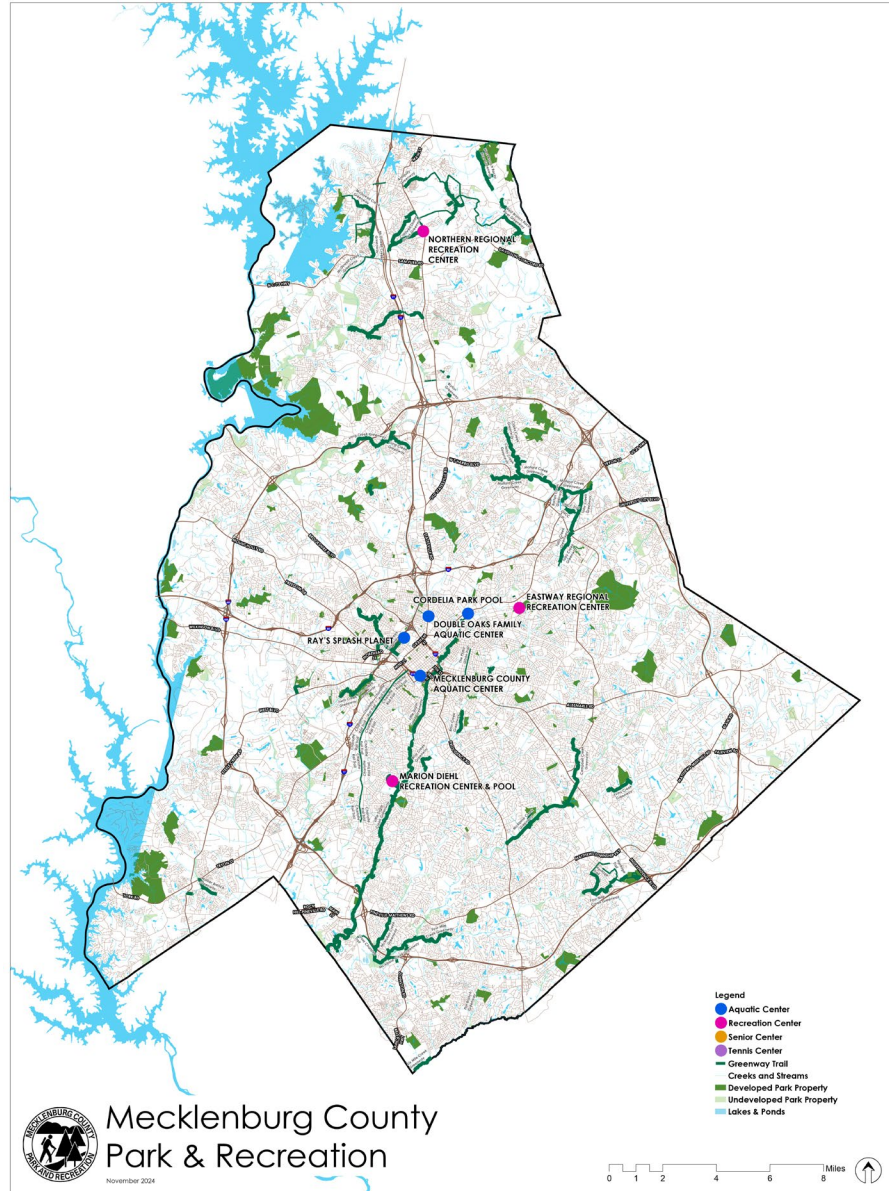


PARKANDREC.MECKNC.GOV

FOLLOW US @MECKPARKREC

Community Recreation Centers

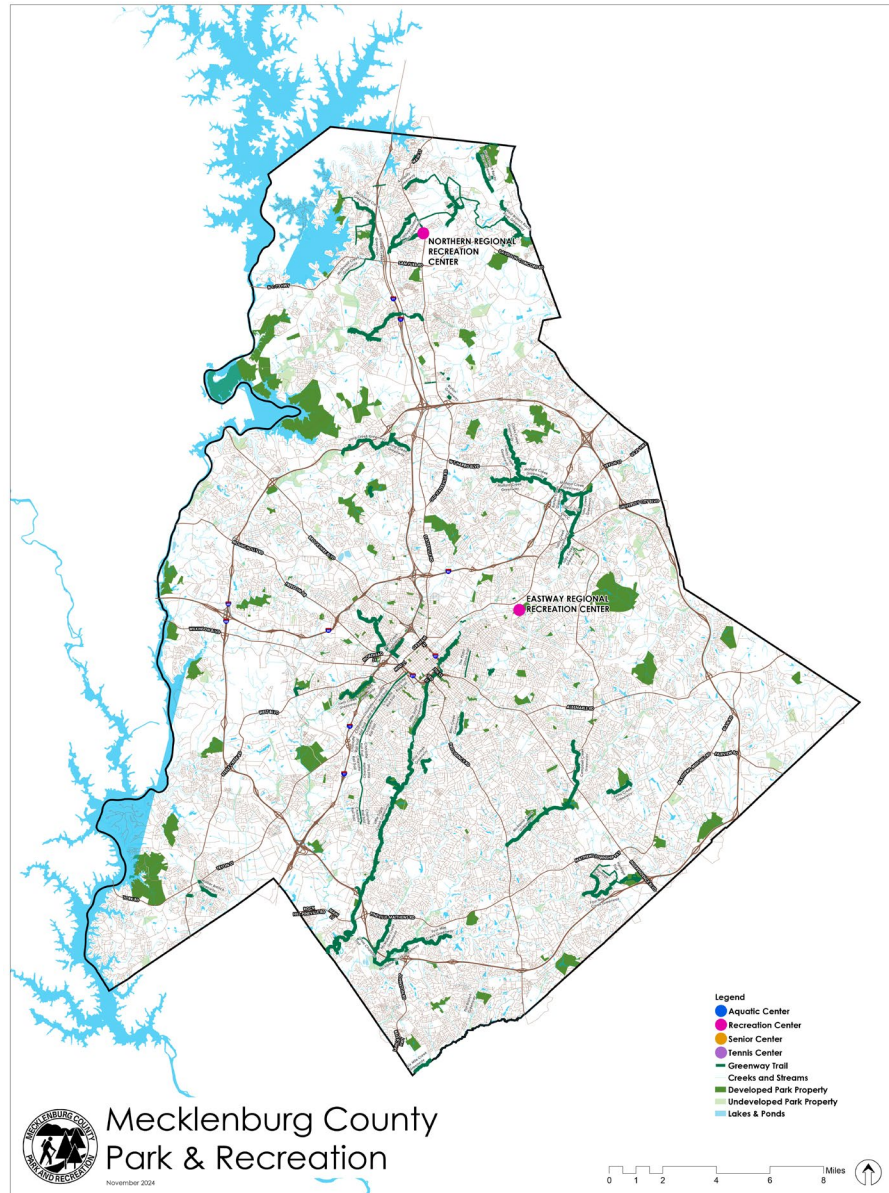




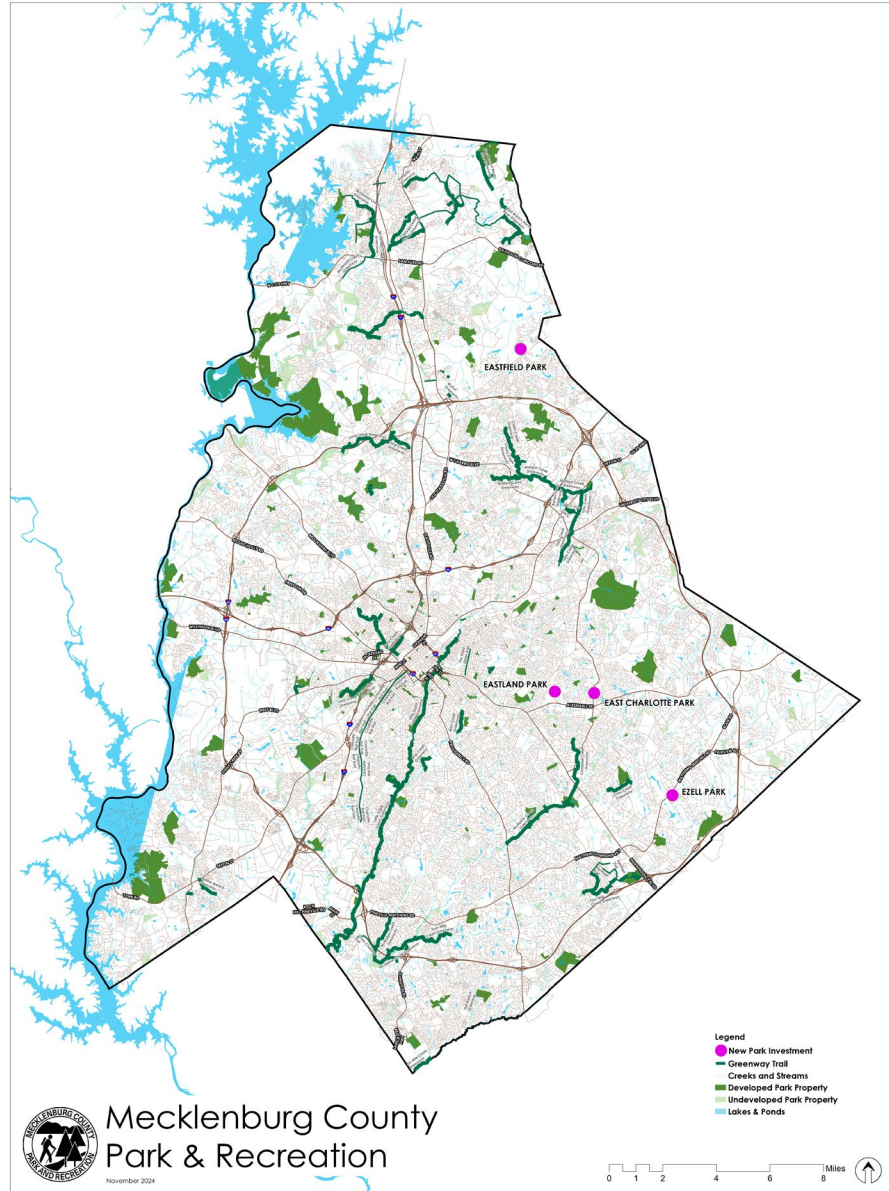
Mecklenburg County
Park & Recreation

November 2024

Swimming Pools



Regional Recreation Centers



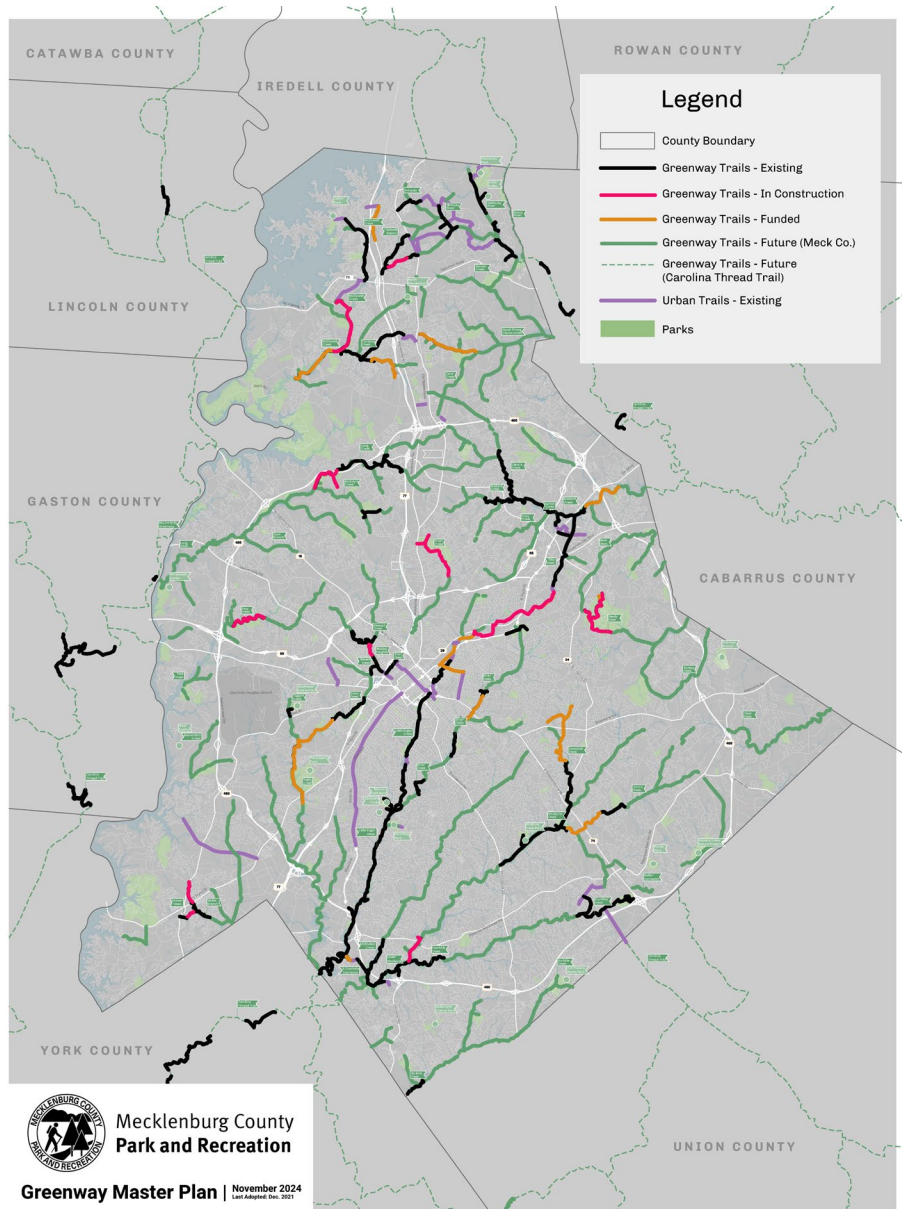
New Parks

Eastfield Park

Eastland Park

East Charlotte Park

Ezell Park



Greenways

Thank you!

