

Citizen's Capital Budget Advisory Committee **“CCBAC”**

Presentation to the Board of County Commissioners

February 26, 2013

Agenda

- ▶ Our Charge
- ▶ CCBAC Composition
- ▶ Tactical Approach
- ▶ Discussion with Commissioners

Mission: To Assist the County Commissioners

The Citizen's Capital Budget Advisory Committee's charge is to:

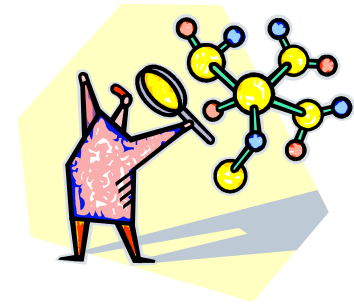
- ▶ Identify and recommend capital standards for designated county agencies
- ▶ Incorporate standards into capital allocation process
- ▶ Determine if requested capital projects meet the standards

Composition: Appointed Volunteer Committee

- ▶ Cynthia P. Bush, Chairman
- ▶ Eric Sieckmann, Vice Chairman
- ▶ Roger Brown
- ▶ Sarah Funkhouser
- ▶ Richard Kingsberry
- ▶ Rachel Martin
- ▶ Jason Roach

Approach

- ▶ Evaluate current standards
- ▶ Research best practices
- ▶ Propose standards for Mecklenburg County
- ▶ Incorporate approved standards into criteria for the capital allocation process
- ▶ Modify as appropriate



Discussion

