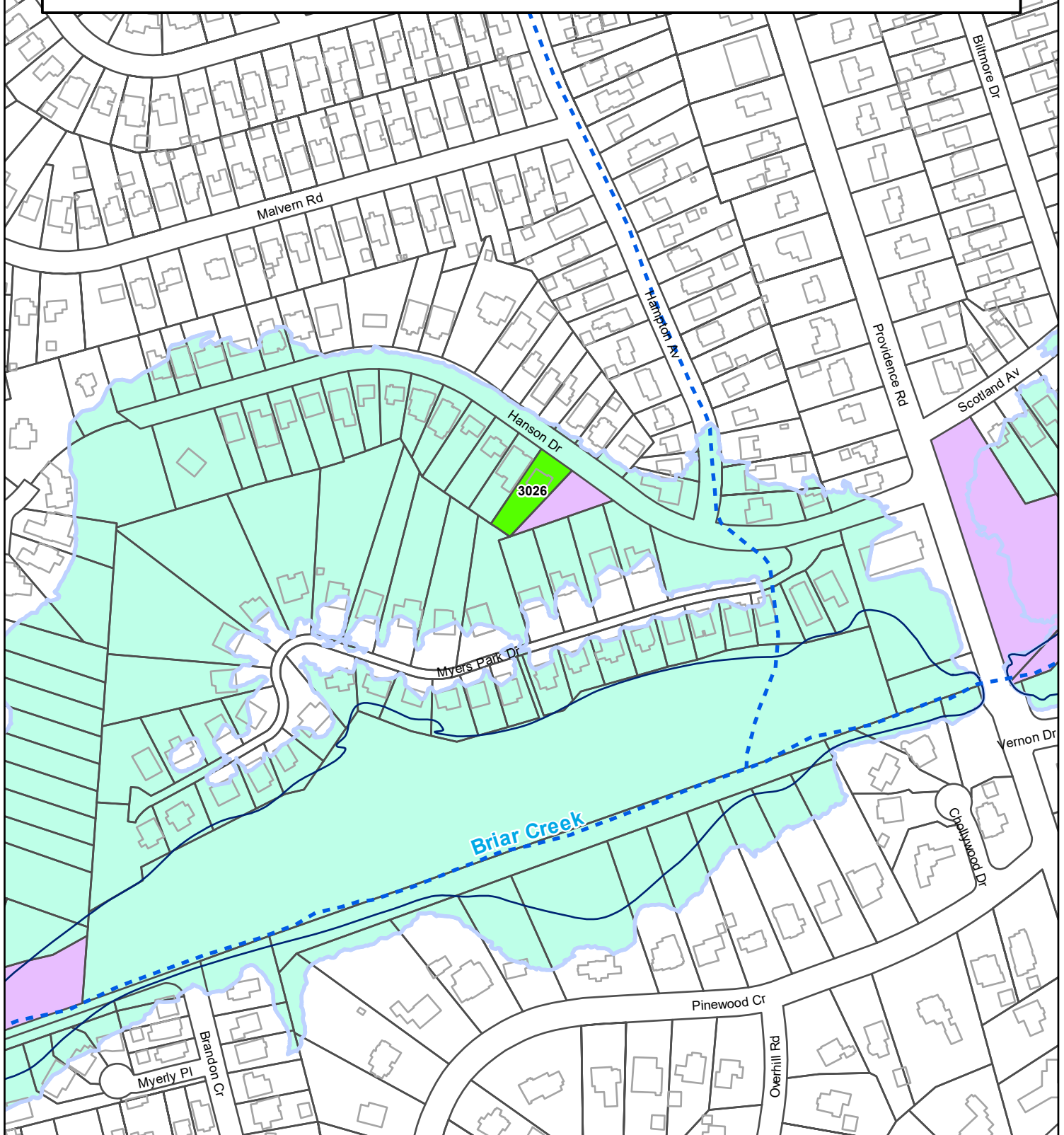


# ***Proposed Floodplain Property Elevation Project***

**FY23 FEMA Hazard Mitigation Assistance - 3026 Hanson Dr**

**Briar Creek**



Charlotte-Mecklenburg Storm Water Services  
PHONE: 311 WEB: stormwater.charmeck.org

0 150 300 Feet



## **LEGEND**

### **Acquisition Status**

- |  |                        |
|--|------------------------|
| Requesting Approval                        | Previously Approved    |
| Non-Participation                          | Potential Acquisitions |
| Mecklenburg County/City of Charlotte Owned |                        |

- |                    |
|--------------------|
| Parcels            |
| Creeks             |
| FEMA Floodplain    |
| Community Floodway |