



LAKE WYLIE
MARINE COMMISSION





MISSION STATEMENT

**TO PROMOTE PUBLIC POLICIES AND
SUPPORT REGULATIONS FOR THE
PRESERVATION OF LAKE WYLIE AND ITS
WILDLIFE AND FOR THE EDUCATION AND
SAFETY OF THE CITIZENS WHO USE THIS
BEAUTIFUL NATURAL RESOURCE**

POLLUTION

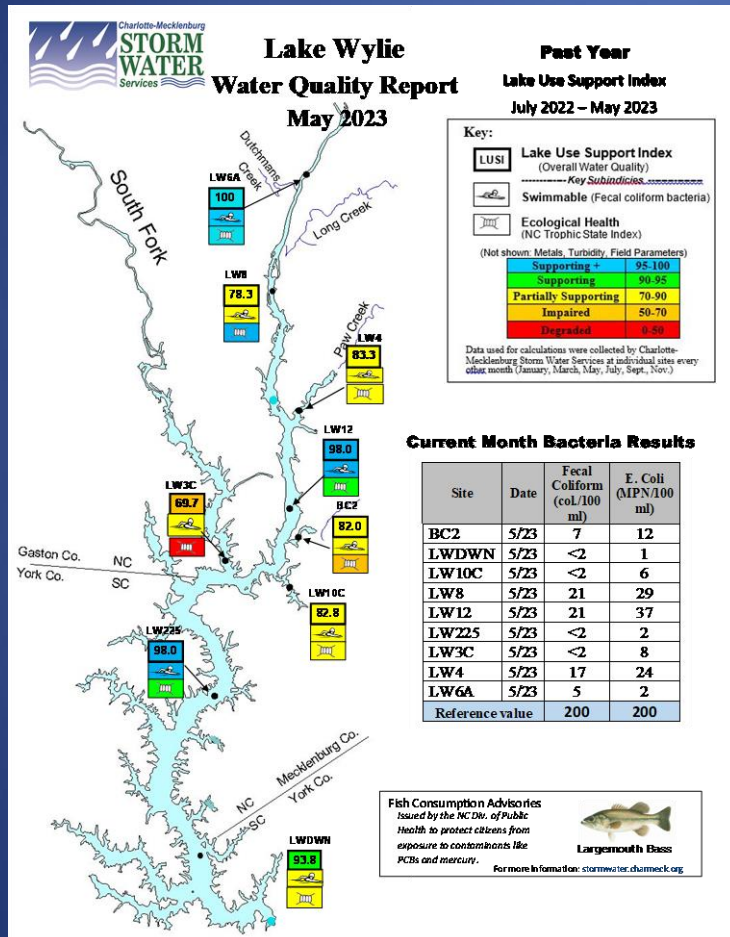
CATAWBA RIVERSWEEP

- ORGANIZED BY CATAWBA RIVERKEEPER
 - SCHEDULED FOR OCTOBER 4th
 - 10 SITES ON LAKE WYLIE
 - FUNDING FROM LWMC, INDIVIDUALS, AND BUSINESSES
- MATERIALS FROM LOCAL BUSINESSES
 - GLOVES, BOTTLED WATER, GRABBERS, TARPS
- COUNTIES PROVIDE DUMPSTERS

WATER QUALITY - SWIM GUIDES

- SPONSORED 2 SWIM GUIDES ON LAKE WYLIE
- CATAWBA RIVERKEEPER PROGRAM
 - SAMPLED FOR E-COLI ON THURSDAYS
 - RESULTS ON WEBSITE APP ON FRIDAYS
 - TO ADVISE WEEKEND SWIMMERS
- OVER 408,000 VIEWS IN THE 2025 SEASON
 - LAKE WYLIE – 45,000 VIEWS

WATER QUALITY- DATA



Lake Wylie

- Routine lake monitoring for May conducted on 5/23/23
- Average water temperature on day of sampling = 74.3 F
- Lake level on day of monitoring = 97.2 ft (target = 97.0 ft)
- Average water clarity on day of monitoring = 1.26 m (4.15 ft)

Routine Monitoring	BC2	Brown's Cove
	LWDWN	Main Channel @ Windjammer Point
	LW10C	Wither's Cove
	LW8	Main channel at Interstate 85 bridge
	LW12	Main channel, downstream of Paw Creek
	LW225	Main channel at Buster Boyd Bridge (Hwy 49)
	LW3C	South Fork Catawba River (at Hwy 273 bridge)
	LW4	Paw Creek Cove
	LW6A	Headwaters, upstream of Dutchman's Creek

Routine Lake Monitoring Efforts (every other month)

Physical Parameters	Wet Chemistry Analyses
<ul style="list-style-type: none"> • Secchi Depth in meters (water clarity) • Temperature (°C) • Specific Conductivity (µS) • Dissolved Oxygen (% and mg/l) • pH • Turbidity (NTU) • Chlorophyll A (RFU) 	<ul style="list-style-type: none"> • Fecal Coliform Bacteria (CFU/100ml) • E.coli Bacteria (MPN/100ml) • Turbidity (NTU) • Nitrate/Nitrite (mg/l) • Ammonia (mg/l) • Total Phosphorus (mg/l) • Total Kjeldahl Nitrogen (mg/l) • Chlorophyll A (µg/l)

Questions/Comments/More information? Please contact:

Dave Ferguson, Sr. Environmental Specialist dave.ferguson@mecknc.gov

SAFETY

- **DANGER BUOYS** - STATES APPROVE AND PLACE
- **NO-WAKE BUOYS**
 - LWMC SCREENS APPLICATIONS
 - **SC DNR** APPROVES, PLACES, AND MAINTAINS BUOYS
 - **NCWRC** APPROVES; LWMC PLACES AND MAINTAINS BUOYS



LAKE WYLIE
MARINE COMMISSION

SAFETY - INSURANCE REGULATION

- LAW ENFORCEMENT REPORTS UNSAFE JET SKI RENTALS
- 2025 LWMC REGULATION: WATERCRAFT INSURANCE REQUIREMENTS CONSISTENT ACROSS THE LAKE
- COMMERCIAL LIABILITY
INSURANCE REQUIRED FOR BOTH OWNER AND RENTEE
\$300,000 PER OCCURRENCE
- ANOTHER SAFETY TOOL FOR LAW ENFORCEMENT



SAFETY - RENTAL VESSEL REGULATION

- PURPOSE:
 - ENSURE THOSE WHO RENT VESSELS DO SO SAFELY
- REGULATION REQUESTED BY LAW ENFORCEMENT
 - “WILD WEST OUT THERE”
- STREAMLINED TO ADDRESS JET SKIS AND PONTON BOATS

SAFETY - RENTAL VESSEL REGULATION

- CHARTER BOAT REQUIREMENTS REMOVED
 - US COAST GUARD HAS JURISDICTION OF CHARTER BOATS ON LAKE WYLIE
 - USCG BRIEFED LOCAL LAW ENFORCEMENT OFFICERS IN JULY
- BUT USCG DOES NOT HAVE JURISDICTION OF RENTAL VESSELS
- **LWMC REGULATION FILLS THAT VOID**

SAFETY - RENTAL VESSEL REGULATION

- REVIEWS / STATUS
 - COUNTY ATTORNEYS
 - COUNTY DAs
 - US COAST GUARD
 - GCPD, YCSO, NCWRC, CMPD
 - MARINA OWNERS AND A USCG LICESNED CAPTAIN
- COMPLIES WITH USCG AND STATE LAWS
- ALL COUNTY DISTRICT ATTORNEYS WILL PROSECUTE OFFENDERS

SAFETY - RENTAL VESSEL REGULATION

- REQUIREMENTS
 - PERMITS AND STICKERS ISSUED BIENNIALLY BY LWMC
 - LIABILITY INSURANCE
 - DOCUMENTED PRE-RIDE SAFETY INSPECTIONS
 - PRE-RIDE RENTEE TRAINING /FAMILIARIZATION
 - ANNUAL RECORDS REVIEW BY LWMC
- TEETH – VIOLATION OF A LWMC REGULATION IS A CLASS 3 MISDEMEANOR

LAW ENFORCEMENT

- LIFE JACKETS &
CHEM LIGHTS ON
ALL POLICE BOATS



- GASTON COUNTY POLICE BOAT
HOUSE

FUNDED IN COUNTY BUDGET
LWMC SEED FUNDS
SOUTH POINT SWIM AREA



SEDIMENTATION

**SEDIMENTATION
IS A CANCER ON
THE LAKE**



LAKE WYLIE
MARINE COMMISSION

SEDIMENT CONTROL MEASURES (SCMS)

- **GASTON COUNTY - ENHANCED SCMS:**
 - APPROVED SITE PLAN INCLUDING SCMS BEFORE GRADING PERMITS ISSUED
 - NO PERMITS TO BE ISSUED BEFORE REZONING
 - PHASED CLEARING OF SITES IS REQUIRED
 - ADDITIONAL SITE INSPECTORS
- **WITH CATAWBA RIVERKEEPER, PURSUED ENHANCED SCMS BY MUNICIPALITIES**
 - HIGH HAZARD SILT FENCING REQUIRED IN BELMONT
 - CRAMERTON AND MOUNT HOLLY TO ADD

ENVIRONMENT - LYNGBYA (*Microseria wollei*)

- INVASIVE SPECIES OF CYANOBACTERIA
- LYNGBYA APPEARS AS ALGAL “MATS” RISING FROM THE LAKE BED
 - DON'T TOUCH THE MATS
 - CAN SICKEN CHILDREN / PETS
 - DON'T WATER SKI OR JET SKI OVER ALGAL MATS
 - DON'T USE SCUMMY WATER FOR CLEANING OR IRRIGATION



LAKE WYLIE
MARINE COMMISSION

ENVIRONMENT - LYNGBYA

2024 TREATMENTS: LAKE NORMAN - 10 ACRES

MT. ISLAND LAKE – 20 ACRES

LAKE WYLIE - 4.5 ACRES

2025 TREATMENTS: LAKE NORMAN - 25 ACRES

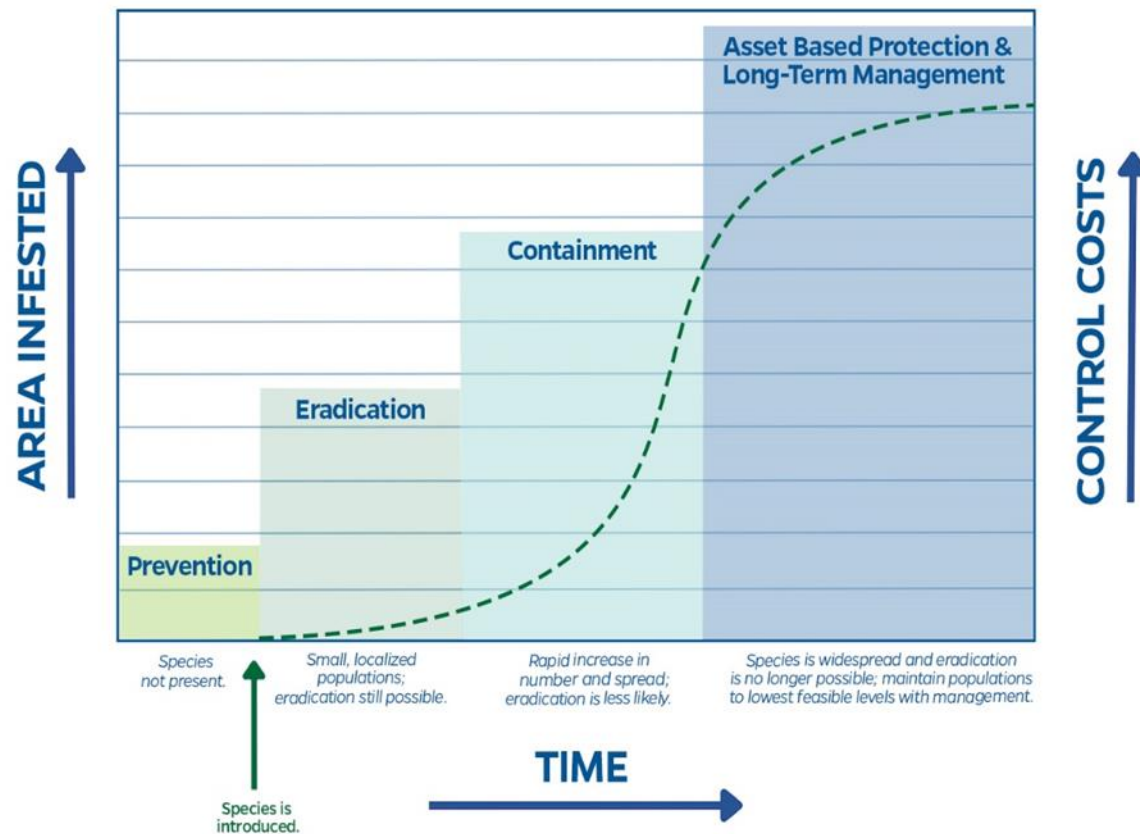
MT. ISLAND LAKE – 23.5 ACRES

LAKE WYLIE – 9.95 ACRES

LAKE GASTON – TREATED 477 OF 1,377 ACRES IN 2025

ENVIRONMENT - LYNGBYA

THE INVASION CURVE



ENVIRONMENT - LYNGBYA

- NORTH CAROLINA STATE UNIVERSITY AQUATIC PLANT MANAGEMENT PROGRAM
 - RESEARCHED THE LAKE GASTON LYNGBYA PROBLEM
 - ALGAECIDE TREATMENT IS EFFECTIVE

APRIL TO SEPTEMBER TREATMENTS; 3 TO 4 YEARS
- COST TO TREAT LAKE GASTON
 - \$718K IN 2021; \$1,198,000 in 2025
- LAKE WYLIE COSTS - \$31K IN 2024; \$48K IN 2025

ENVIRONMENT – LYNGBYA SYMPOSIUM

- LWMC INITIATED THE JANUARY SYMPOSIUM
 - COUNTIES REPRESENTED
 - PRESENTATION BY NC STATE AQUATIC PLANT MANAGEMENT PROGRAM
- THANKS TO COUNTIES FOR CONTRIBUTING TO THE ON-GOING ALGAECIDE TREATMENTS

ENVIRONMENT - LYNGBYA

LYNGBYA ADDED TO THE LIST FOR NC FUNDING,

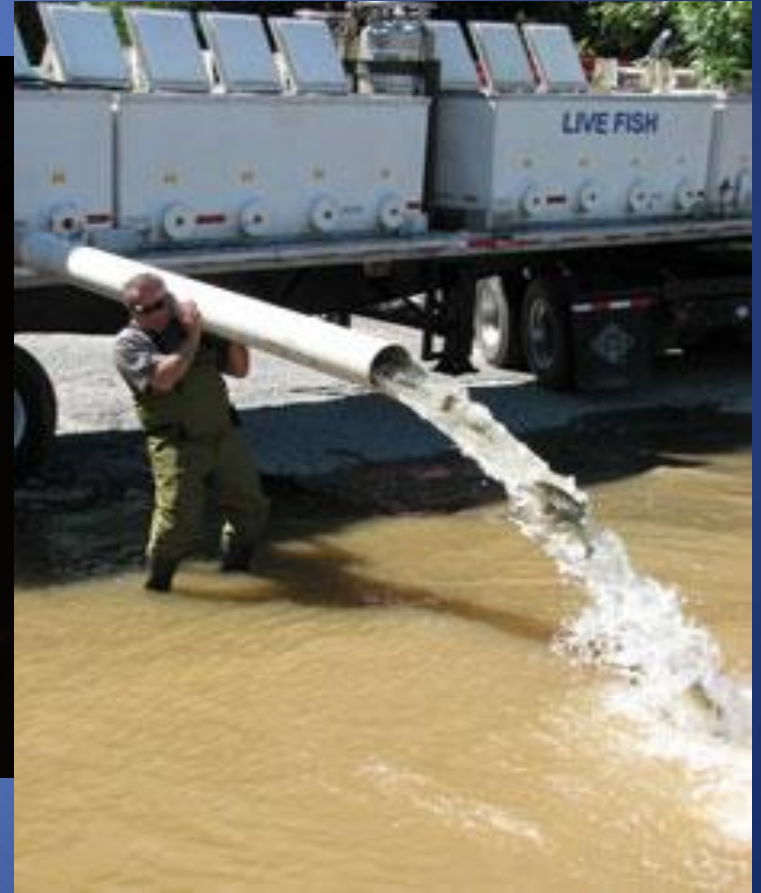
- FUNDING IS FOR LAKES THROUGHOUT NC
- NO SEPARATE STATE LYNGBYA FUNDING

“SECOND ANNUAL LYNGBYA CONFERENCE”

- TO REVIEW 2025 TREATMENT RESULTS
- REVIEW FUNDING NEEDS FOR THE OUT-YEARS

ENVIRONMENT - HYDRILLA CONTROL

CARP AND CHEMICALS



LAKE WYLIE
MARINE COMMISSION

Photo by
Sandy Dupuy

ENVIRONMENT - ALLIGATOR WEED



- THRIPS
- MANUAL REMOVAL

FEDERAL LAW

TITLE 44, CODE OF FEDERAL REGULATIONS

DOCK BUILDING REQUIRES **HYDROLOGIC AND HYDRAULIC ANALYSES** TO SHOW THE DOCK WOULD NOT INCREASE FLOOD LEVELS DURING THE 100 YEAR FLOOD

- COST OF ANALYSES - \$2500 TO \$10,000
- EVERY DOCK PERMITTED IN GASTON COUNTY SINCE 2022 MEETS THE ANALYSES

LWMC HAS REQUESTED RELIEF

- SENATOR TILLIS'S OFFICE
- REGULATIONS.GOV

EDUCATION

- CATAWBA-WATEREE WATER MANAGEMENT GROUP'S CITIZENS' WATER ACADEMY
- MONTHLY NEWSLETTER
- MONTHLY MEETINGS (EXCEPT DECEMBER)
- MID-ATLANTIC BOAT SHOW
- RIVERFEST IN McADENVILLE
- GIRABALDI FESTIVAL IN BELMONT
- *LAKEWYLIEMARINECOMMISSION.COM*



**We Protect, Preserve, and Promote
Lake Wylie as a Clean and Safe Recreational
Waterway**

**For more information, visit
LakeWylieMarineCommission.com**