

# Discovery Place Nature

Board of County Commissioners Meeting  
Mecklenburg County Park and Recreation  
June 16, 2020



# Discovery Place Nature



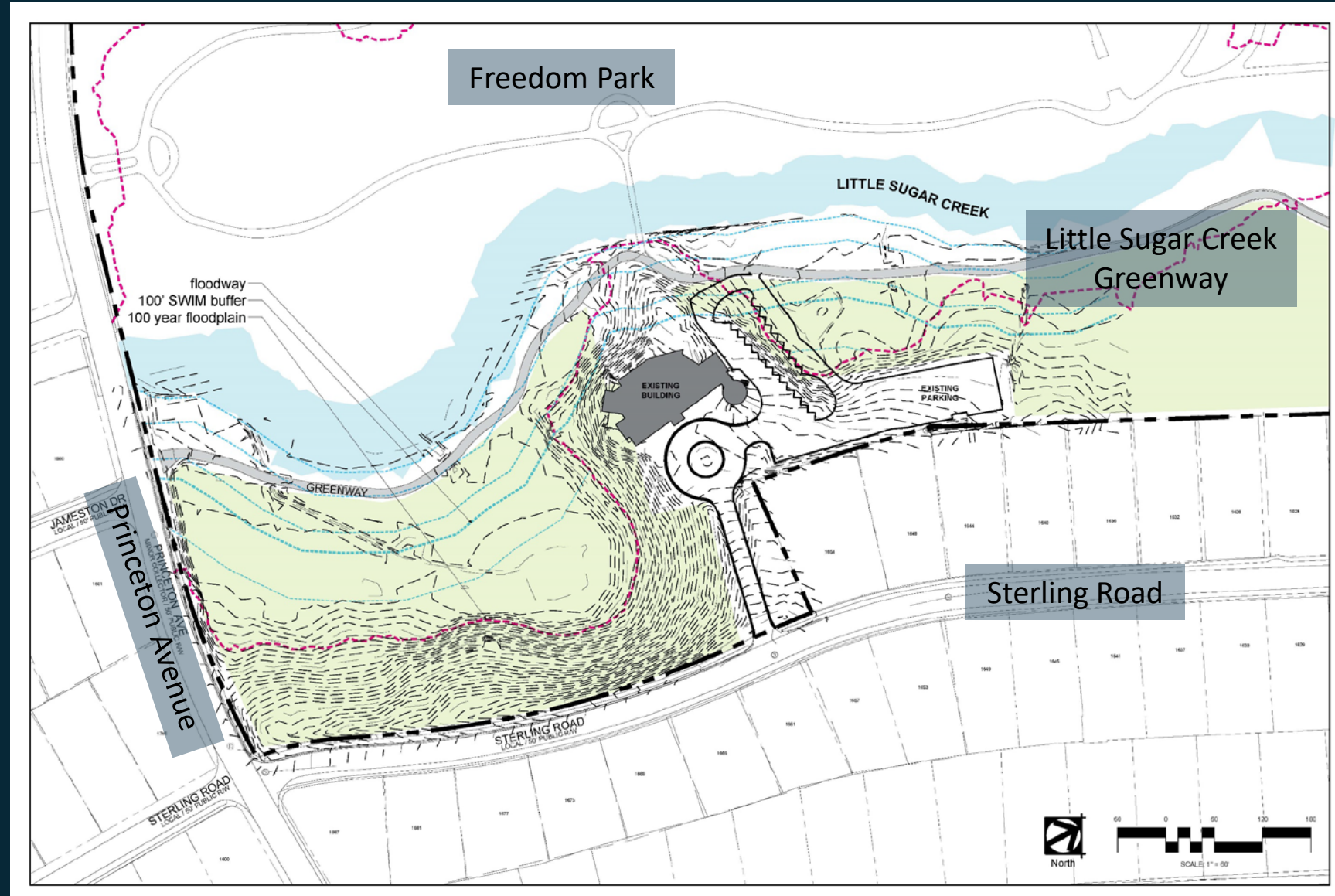
- Replacement of structure built in 1951
- Current building is 13,000 sf
- Current design at 25,900 sf
- Parking
  - Existing spaces: 61
  - Minimum required: 87





# Site Characteristics

- Topography
- Floodplain
- Existing forest
- Existing impacted areas
- Adjacent to site
  - Houses
  - Little Sugar Creek Greenway
  - Freedom Park





# Project History



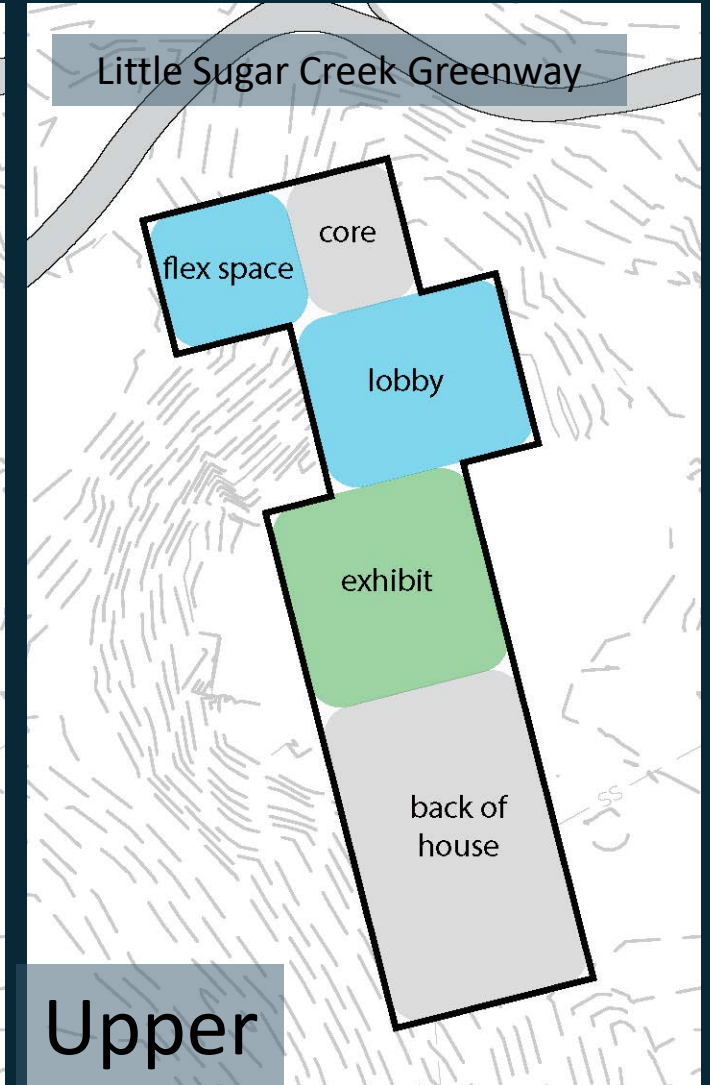
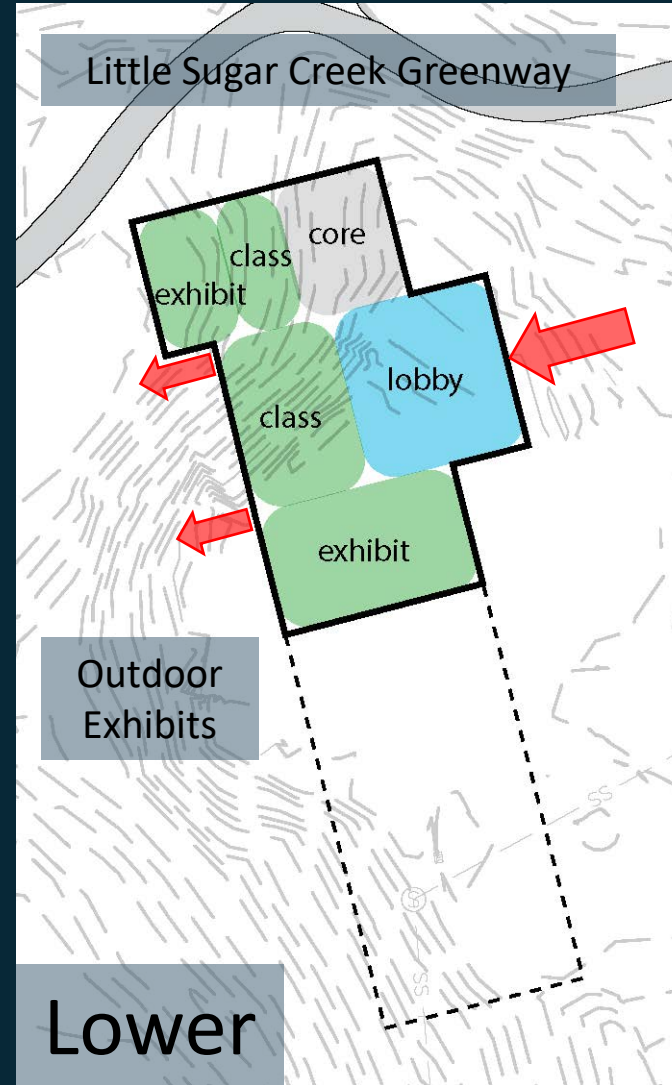
- Master plan effort led by Discovery Place 2015
- Design team selected with kick-off meeting May 2019
- CM at Risk contractor selected July 2019
- Preliminary design complete and shared with community groups
- Applied for access and buffer variance, access variance approved





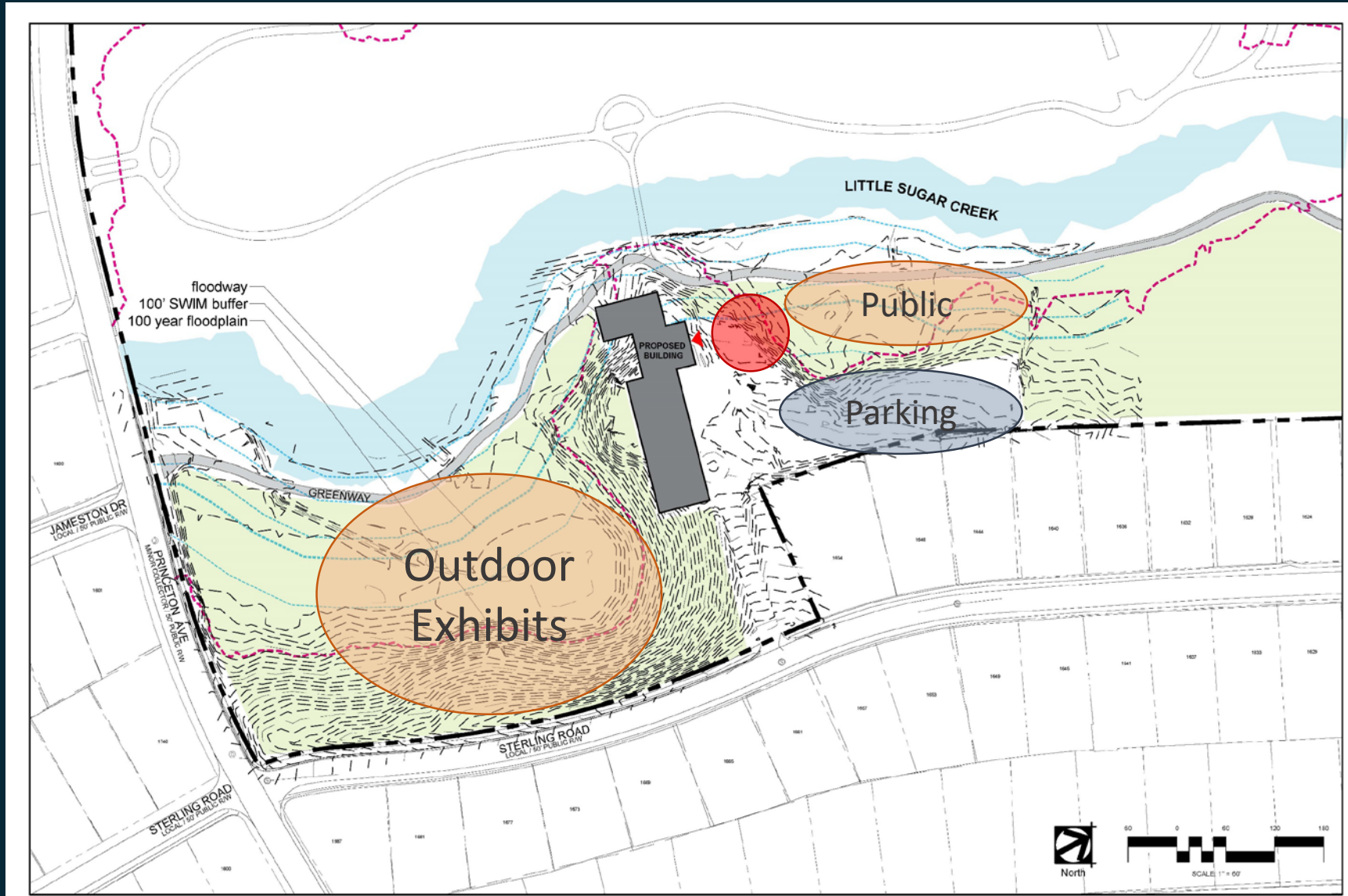
# Proposed Building

- Site: Existing building location is ideal
- Entry: Located on the lower level adjacent to greenway and park
- Size: Proposed building is approximately 25,900 sf
  - 11,800 sf public space
  - 14,100 sf back of house



# Site Amenities

- Entrance plaza
- Public Exhibits
  - Pollinator garden
  - Apiary
  - Frog bog
- Outdoor Exhibits
  - Otter habitat
  - Outdoor classroom
  - Canopy walk
  - Aviary
  - Learning kiosks
  - Walking trail





# December Neighbor Meeting



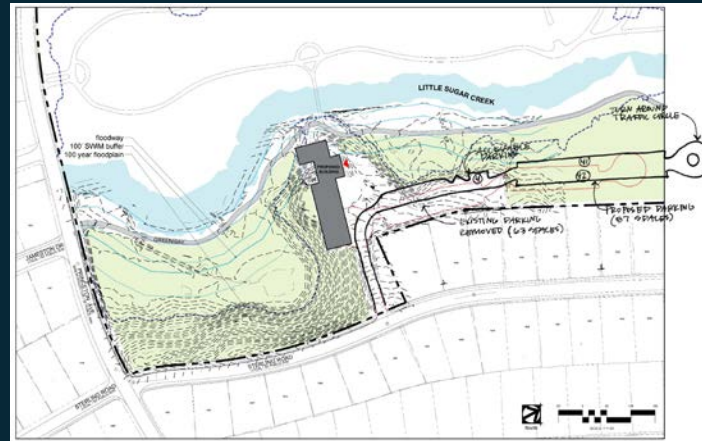
- Request for Additional Engagement
- Land Use and Environmental Impacts
  - Tree removal
- Congestion and Traffic
  - Car and bus traffic
  - On-road parking
- Safety and Security





# January Neighbor Meeting

- Too much impact to site, existing trees
- Like separate bus drop-off
- Impacts to floodplain
- Adjust sidewalk access

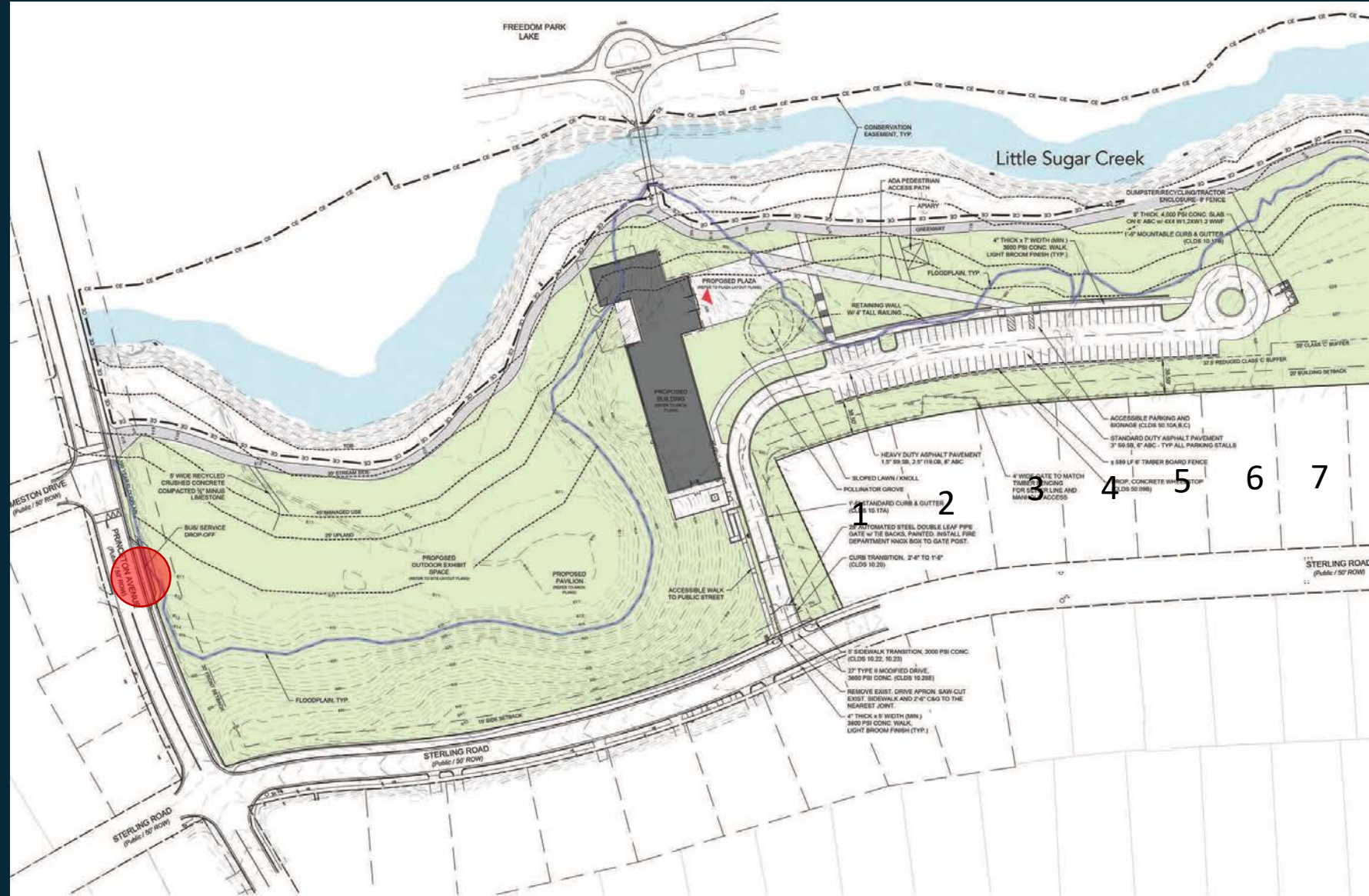




# February Neighbor Meeting



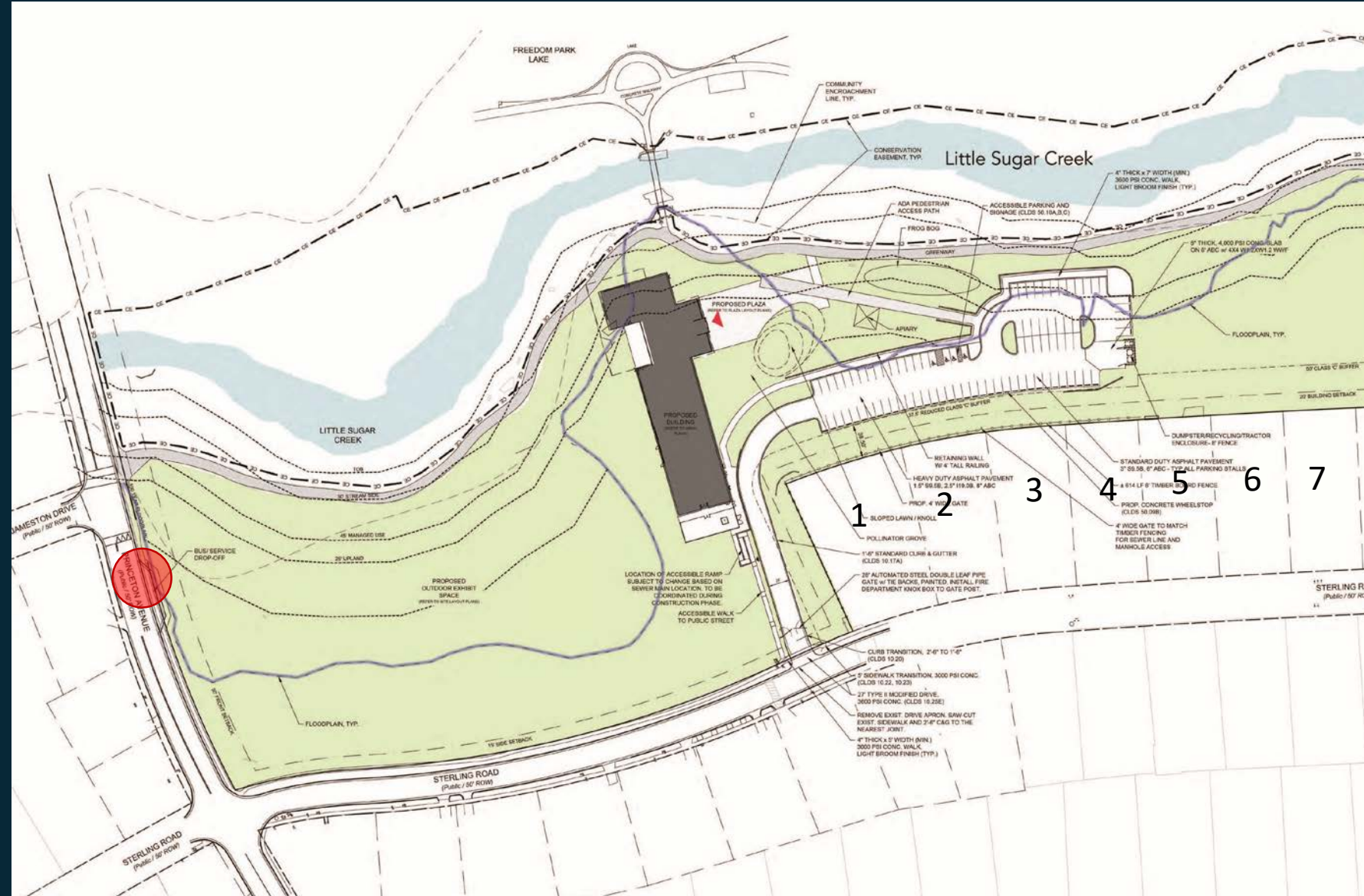
- Princeton bus drop-off preferred
- Too much impact to the site
- Not the most compact option shared





# Final Site Concept

- Bus drop off on Princeton with access through site
- Turnaround integrated into parking area
- Improves circulation
- Minimizes impact to site/adjacent properties





# Final Site Concept

- Planted buffer between residential properties and parking lot
- Buffer includes existing trees, planted trees and shrubs
- Min. 6' tall privacy fence





# Next Steps

- Re-activate design team
- Move design forward
- Host public meeting to unveil final project design

## Anticipated Schedule:

- Resume Design: Summer 2020
- Begin: Summer 2021
- Completion: Early 2023





# Discovery Place Nature

