

**FINAL ASSESSMENT ROLL RESOLUTION  
STREET LIGHTING ASSESSMENT PROJECT  
MOUNTAIN POINT SUBDIVISION  
OPERATION COSTS FY 2012**

**WHEREAS**, the Mecklenburg Board of County Commissioners has adopted a street lighting assessment program pursuant to North Carolina law; and

**WHEREAS**, the Acorn street lighting fixtures have been installed and are being operated on all of the streets in the Mountain Point Subdivision; and

**WHEREAS**, the Mecklenburg Board of County Commissioners adopted a final assessment resolution on this project on February 3, 1998, approving the project and requesting that Duke Power Company install and operate the Acorn street lighting fixtures on all streets in the Mountain Point Subdivision at an approximate cost of \$16,400 for the cost of the Acorn street lighting fixtures and an approximate cost of \$400 per month to operate these streetlights, which may increase (based on Duke Power Company rates), plus other costs as described in Section 153A-193 of the General Statutes of North Carolina and that the Acorn street lighting fixture charges and monthly charges will be paid to Duke Power Company by Mecklenburg County, and these charges and other costs will be assessed to the property owners; and

**WHEREAS**, Mecklenburg County has paid a total of \$5,107.54 to Duke Power Company for charges incurred for the operation of these street lights in the Mountain Point Subdivision during the 2012 Fiscal Year plus \$300 in legal and other costs for a total of \$5,407.54 spent for the operation of the street lights in the Mountain Point Subdivision during the 2012 Fiscal Year; and

**WHEREAS**, the basis for assessment will be 100 percent (100%) of the property owner's share of the total cost to operate the street lights during the 2012 Fiscal Year plus other costs as described in Section 153A-193 of the General Statutes of North Carolina, said total cost to be apportioned equally to each parcel of land on said streets; and

**WHEREAS**, the proposed terms of payment of the assessment are such that each property owner must pay the total per lot share upon receipt of an assessment from Mecklenburg County; and

**WHEREAS**, the proposed term of payment for each property owner's portion of the cost of said work must be paid by direct payment to Mecklenburg County; and

**WHEREAS**, the Mecklenburg County Land Use & Environmental Services Agency has prepared the Preliminary Assessment Roll on a map showing each lot assessed, the basis for assessment, the amount assessed against each lot, and the name of the owner of each lot as shown on the Mecklenburg County tax record, which the Preliminary Assessment Roll is attached hereto and incorporated herein by reference; and

**WHEREAS**, after notice was duly given, a public hearing was held on February 5, 2013 at 6:30 p.m. for the purpose of confirmation, modification, or annulment of the Preliminary Assessment Roll; and

**WHEREAS**, there being no changes or annulment made of the Preliminary Assessment Roll, the same is hereby confirmed by this resolution.

**NOW THEREFORE BE IT RESOLVED**, that the Mecklenburg Board of County Commissioners does adopt this Final Assessment Roll Resolution on the Street Lighting Assessment Project for the operation of the street lighting fixtures during the 2012 Fiscal Year in the Mountain Point Subdivision, and requests the Mecklenburg

County Land Use & Environmental Services Agency to prepare the necessary documents for transmittal to the County Tax Collector's Office to provide for the collection from the property owners for the cost of the operation of the street lighting fixtures during the 2012 Fiscal Year which is \$5,407.54.

ADOPTED ON THE \_\_\_\_\_ DAY OF \_\_\_\_\_ 2013.

\_\_\_\_\_  
Clerk to the Mecklenburg Board  
of County Commissioners

ADOPTED AS TO FORM:

\_\_\_\_\_  
County Attorney

**Mountain Point Subdivision**

SL 96-06

Final

Assessment Roll for FY 2012-"Revised" 11/30/12 By Rhonda Buckner

PARCEL	OWNER1	OWNER2	SITUS_ADDRESS	MAILING_ADDRESS	CITY_STATE_ZIP	LEGAL_DESC	COST
02309231	James R. Leiner	Denise H. Leiner	5136 Mountain Point Ln	5136 Mountain Point Ln	Charlotte, NC 28216	NA	\$ 62.88
02316201	Robert M. Murray	Diane P. Murray	5104 Mountain Point Ln	5104 Mountain Point Ln	Charlotte, NC 28216	L22M2361	\$ 62.88
02316202	Juan M Lorenzo	Esmi Lorenzo	5024 Mountain Point Ln	5024 Mountain Point Ln	Charlotte, NC 28216	L23M2361	\$ 62.88
02316203	Mountain Point Utilities		5008 Mountain Point Ln	107 Comercial Park Dr	Concord, NC 28027	WELLM2361	\$ 62.88
02316204	William G. Boyd	Donna R. Boyd	5000 Mountain Point Ln	5000 Mountain Point Ln	Charlotte, NC 28216	L26M2361	\$ 62.88
02316205	Michael J. Hansard	Helen Hansard	4936 Mountain Point Ln	PO Box 90	Paw Creek, NC 28130	L27M2361	\$ 62.88
02316206	Jeffrey B. Watson	Candace L. Watson	4914 Mountain Point Ln	8920 Woodland Park Ln	Charlotte, NC 28214	L28M2361	\$ 62.88
02316207	Thomas P Barker		4840 Mountain Point Ln	4840 Mountain Point Ln	Charlotte, NC 28216	L29M2360	\$ 62.88
02316208	James P. Ruse	Kathryn Wyke	4830 Mountain Point Ln	4830 Mountain Point Ln	Charlotte, NC 28206	L30M2360	\$ 62.88
02316209	Richard G. Sanderson	Dawn P. Sanderson	4820 Mountain Point Ln	3015 Northampton Dr	Charlotte, NC 28210	L31M2360	\$ 62.88
02316210	Samuel D. Brown	Judy M. Brown	4810 Mountain Point Ln	10300 S. Ford Rd	Charlotte, NC 28214	L32M2360	\$ 62.88
02316211	Barbara B. Rocco		4800 Mountain Point Ln	4800 Mountain Point Ln	Charlotte, NC 28216	L33M2360	\$ 62.88
02316212	Thomas J. Permenter	Amy C. Permenter	4722 Mountain Point Ln	2810 Chalgrove Ln	Charlotte, NC 28216	L34M2360	\$ 62.88
02316213	Roger M. Gillon	Joyce E. Gillon	4712 Mountain Point Ln	4712 Mountain Point Ln	Charlotte, NC 28216	L35M2360	\$ 62.88
02316214	Douglas J. Mowry	Debra K. Mowry	4702 Mountain Point Ln	4702 Mountain Point Ln	Charlotte, NC 28216	L36M2360	\$ 62.88
02316222	Mountain Point Utilities		Mountain Point Ln	202 Mackenan CT.	Cary, NC 27511	L84WELLM23558	\$ 62.88
02316301	Gary P. Sanderson	Barbara Kay Sanderson	4701 Mountain Point Ln	4701 Mountain Point Ln	Charlotte, NC 28216	L1M23226	\$ 62.88
02316302	Robert A. Clark		4711 Mountain Point Ln	4711 Mountain Point Ln	Charlotte, NC 28216	L2M23226	\$ 62.88
02316303	Richard A Goodman	Lori M Goodman	4721 Mountain Point Ln	4721 Mountain Point Ln	Charlotte, NC 28216	L3M2360	\$ 62.88
02316304	Bobby R Keller	Mildred B Keller	11901 Mountain Lake Cove	11901 Mountain Lake Cove	Charlotte, NC 28216	L4M2360	\$ 62.88
02316305	Debra B. Semmler		11915 Mountain Lake Cove	11915 Mountain Lake Cove	Charlotte, NC 28216	L5M2360	\$ 62.88
02316306	Joseph R. Baich Jr.	Theresa M. Baich	12030 Mountain Lake Cove	12030 Mountain Lake Cove	Charlotte, NC 28216	L6M2360	\$ 62.88
02316307	Wesley J. Yount	Cheryl A. Yount	12026 Mountain Lake Cove	12026 Mountain Lake Cove	Charlotte, NC 28216	L7M2360	\$ 62.88
02316308	Robert C. Spivey	Patsy C. Spivey	12016 Mountain Lake Cove	12016 Mountain Lake Cove	Charlotte, NC 28216	L8M2360	\$ 62.88
02316309	Robert E. McRorie	Deborah W. McRorie	12006 Mountain Lake Cove	12006 Mountain Lake Cove	Charlotte, NC 28216	L9P10M2360	\$ 62.88
02316310	Reinhard Von Hennings	Irene Von Hennings	11924 Mountain Lake Cove	415-D Minuet Ln	Charlotte, NC 28217	P10M2360	\$ 62.88
02316312	Domenic Pomposo	Lisa G. Pomposo	11900 Mountain Lake Cove	70 Robert Rd	Marlboro, MA 01752	L12M2360	\$ 62.88
02316313	Joel E. Murphy	Corinne Murphy	4831 Mountain Point Ln	8400 F Belhaven Bv	Charlotte, NC 28216	L13M2360	\$ 62.88
02316314	Nilesh K Patel		4841 Mountain Point Ln	4841 Mountain Point Ln	Charlotte, NC 28216	L14M2360	\$ 62.88
02316315	J. Gregory Fagan	Barbara Ann Fagan	4901 Mountain Point Ln	3301 Parting Brook Ct	Charlotte, NC 28210	L15M2361	\$ 62.88
02316316	Robert M. Bandis	Kerry R. Bandis	4907 Mountain Point Ln	4907 Mountain Point Ln	Charlotte, NC 28216	L16M2361	\$ 62.88
02316317	Tom H. Brady, Jr.		4913 Mountain Point Ln	4913 Mountain Point Ln	Charlotte, NC 28216	L17M2361	\$ 62.88
02316318	GB Enterprises of Charlotte, LLC		4921 Mountain Point Ln	4921 Mountain Point Ln	Charlotte, NC 28216	L18M23150	\$ 62.88
02316319	Wayne R. Horn	Betty D. Canupp	4933 Mountain Point Ln	4933 Mountain Point Ln	Charlotte, NC 28216	L19M2361	\$ 62.88
02316320	Douglas S. Morgan	Teresa J. Morgan	4943 Mountain Point Ln	5201 Mountain Point Ln	Charlotte, NC 28216	L20M2361	\$ 62.88
02316322	Paul L. Brackbill	Cathy J. Brackbill	5101 Mountain Point Ln	5101 Mountain Point Ln	Charlotte, NC 28216	L21M2361	\$ 62.88
02316324	Jane A. Taylor	Nikolas Taylor	12001 Mountain Lake Cove	12001 Mountain Lake Cove	Charlotte, NC 28214	L19M25877	\$ 62.88
02316325	Burl Webb, Jr.	Leigh B. Webb	12015 Mountain Lake Cove	12015 Mountain Lake Cove	Charlotte, NC 28216	L20M25877	\$ 62.88
02316326	Joseph R. Baich	Theresa M. Baich	12031 Mountain Lake Cove	2030 Mountain Park Dr	Charlotte, NC 28214	L21M25877	\$ 62.88
02316401	Rayburn L. Chestnutt III	Kathryn B. Chestnutt	5131 Mountain Point Ln	5131 Mountain Point Ln	Charlotte, NC 28216	L37M23548	\$ 62.88
02316402	Douglas S. Morgan	Teresa J. Morgan	5201 Mountain Point Ln	5201 Mountain Point Ln	Charlotte, NC 28216	L38M23548	\$ 62.88
02316403	Kevin B. Dunn	Maria P. Dunn	5211 Mountain Point Ln	5211 Mountain Point Ln	Charlotte, NC 28216	L39M23548	\$ 62.88
02316404	Brenda T. Stubbs		5219 Mountain Point Ln	5219 Mountain Point Ln	Charlotte, NC 28216	L40M23548	\$ 62.88
02316405	Bobby L. Bradshaw	Sylvia S. Bradshaw	5231 Mountain Point Ln	5231 Mountain Point Ln	Charlotte, NC 28216	L41M23548	\$ 62.88
02316406	Robert Hunt	Merja Hunt	5301 Mountain Point Ln	9240 Wedgewood Dr	Huntersville, NC 28078	L42M23548	\$ 62.88
02316407	Benjamin M. Daugherty	Nancy L. Daugherty	5315 Mountain Point Ln	5315 Mountain Point Ln	Charlotte, NC 28216	L43M23548	\$ 62.88
02316408	Marvin S. Wnyiemo	Sienna M. Wnyiemo	5323 Mountain Point Ln	5323 Mountain Point Ln	Charlotte, NC 28216	L44M23548	\$ 62.88
02316409	Harvey E. Honeycutt	Patsy B. Honeycutt	5333 Mountain Point Ln	5333 Mountain Point Ln	Charlotte, NC 28216	L45M23548	\$ 62.88
02316410	Eugene M. Proffitt	Donna A. Proffitt	5345 Mountain Point Ln	5345 Mountain Point Ln	Charlotte, NC 28216	L46M23548	\$ 62.88
02316411	Angel L. Perez	Virginia D. Perez	5401 Mountain Point Ln	5401 Mountain Point Ln	Charlotte, NC 28216	L47M23548	\$ 62.88
02316412	Stephen G. Lukoskie	Jeanette A. Lukoskie	5409 Mountain Point Ln	5409 Mountain Point Ln	Charlotte, NC 28216	L48M23548	\$ 62.88
02316413	David L. Stilwell	Elizabeth S. Stilwell	5417 Mountain Point Ln	5417 Mountain Point Ln	Charlotte, NC 28216	L49M23548	\$ 62.88
02316414	Vicky S. Ford		5425 Mountain Point Ln	5425 Mountain Point Ln	Charlotte, NC 28216	L50M23548	\$ 62.88
02316415	Horace D. Bailey	Deborah Jane Bailey	5431 Mountain Point Ln	5431 Mountain Point Ln	Charlotte, NC 28216	L51M23559	\$ 62.88
02316416	John J. Raymond	Patricia L. Raymond	11901 Pinnacle Point Ln	11901 Pinnacle Point Ln	Charlotte, NC 28216	L52M23559	\$ 62.88
02316417	Edward J. Jenkins Jr.	Leslie B. Jenkins	11911 Pinnacle Point Ln	11911 Pinnacle Point Ln	Charlotte, NC 28216	L53M23559	\$ 62.88
02316418	Christi R. Keller		11919 Pinnacle Point Ln	4840 Mountain Point Lane	Charlotte, NC 28216	L54M23559	\$ 62.88
02316419	James Webster	Marilyn Webster; Kathleen Webster	11929 Pinnacle Point Ln	902 Pine Forest Rd	Charlotte, NC 28214	L55M23559	\$ 62.88
02316420	Kenneth A. Love		11937 Pinnacle Point Ln	P.O. Box 242	Paw Creek, NC 28130	L56M23559	\$ 62.88
02316421	Walter R. Leigh	Helen T. Leigh	11943 Pinnacle Point Ln	11943 Pinnacle Point Ln	Charlotte, NC 28216	L57M23559	\$ 62.88
02316422	James H. Woodward	Martha H. Woodward	11945 Pinnacle Point Ln	11945 Pinnacle Point Ln	Charlotte, NC 28216	L58M23559	\$ 62.88

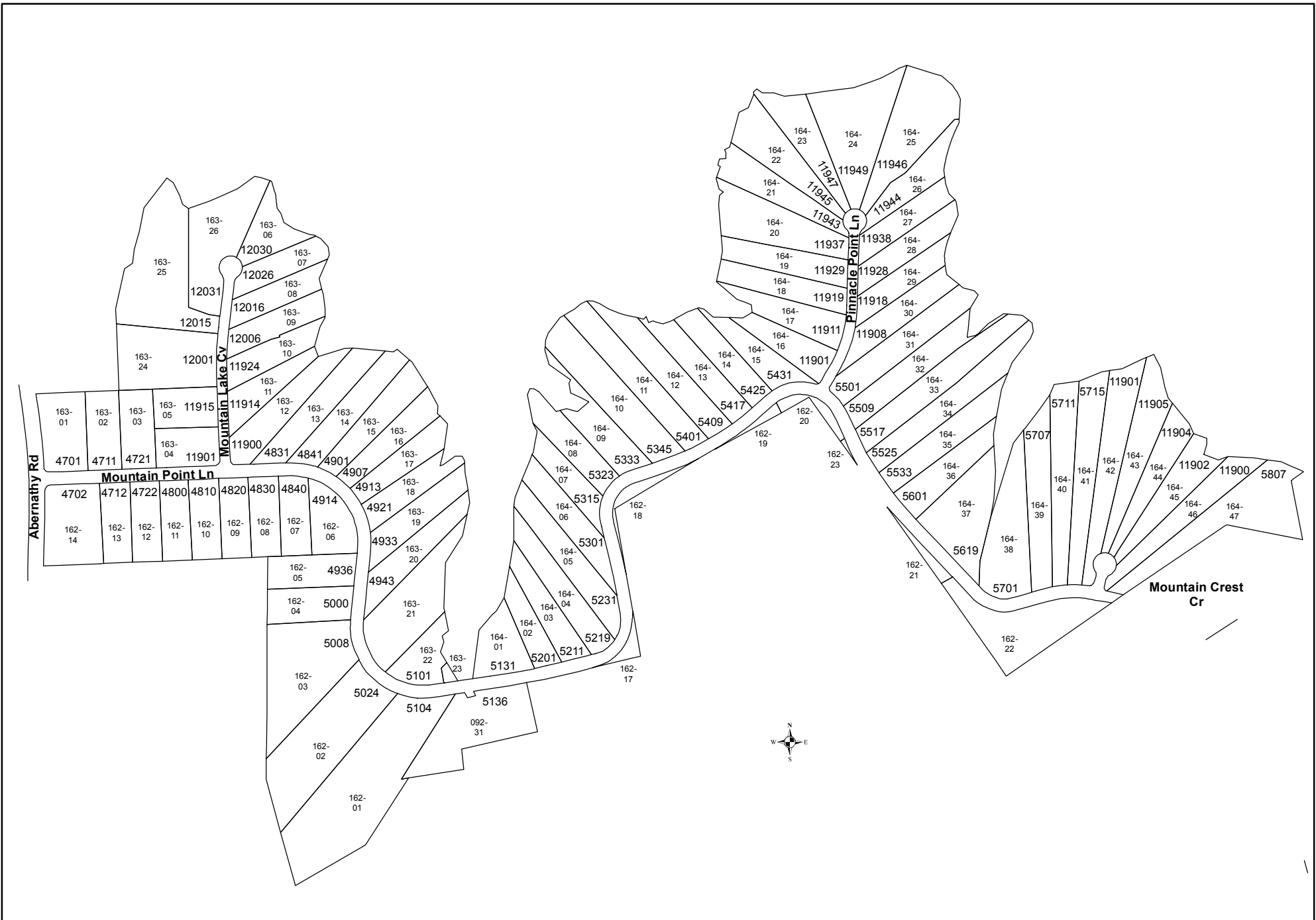
**Mountain Point Subdivision**

SL 96-06

Final

Assessment Roll for FY 2012-"Revised" 11/30/12 By Rhonda Buckner

PARCEL	OWNER1	OWNER2	SITUS_ADDRESS	MAILING_ADDRESS	CITY_STATE_ZIP	LEGAL_DESC	COST	
02316423	Gary L. Lancaster	Bennett Lancaster	11947 Pinnacle Point Ln	11947 Pinnacle Point Ln	Charlotte, NC 28216	L59M23559	\$ 62.88	
02316424	Thomas L. Alligood	Dawn Julian Alligood	11949 Pinnacle Point Ln	11949 Pinnacle Point Ln	Charlotte, NC 28216	L60M23559	\$ 62.88	
02316425	Steve V. Smith	Monty N. Smith	11946 Pinnacle Point Ln	11946 Pinnacle Point Ln	Charlotte, NC 28211	P61M23559	\$ 62.88	
02316426	Robert J. Shaner	Sharon T. Shaner	11944 Pinnacle Point Ln	11944 Pinnacle Point Ln	Charlotte, NC 28216	P62M23559	\$ 62.88	
02316427	David G. Fisher	Pamela Fisher	11938 Pinnacle Point Ln	11938 Pinnacle Point Ln	Charlotte, NC 28216	L64M23559	\$ 62.88	
02316428	David G. Fisher	Pamela Fisher	11928 Pinnacle Point Ln	11928 Pinnacle Point Ln	Charlotte, NC 28216	L64M23559	\$ 62.88	
02316429	Mitchell V. Clark	Delores L. Clark	11918 Pinnacle Point Ln	11918 Pinnacle Point Ln	Charlotte, NC 28216	L65M23559	\$ 62.88	
02316430	Ginger A. Dickerson		11908 Pinnacle Point Ln	11908 Pinnacle Point Ln	Charlotte, NC 28216	L66M23559	\$ 62.88	
02316431	Qiang Sun	Chunbo Huang	5501 Mountain Point Ln	5501 Mountain Point Ln	Charlotte, NC 28216	L67M23559	\$ 62.88	
02316432	Robert J. Burns	Margaret T. Burns	5509 Mountain Point Ln	4702 Mountain Point Ln	Charlotte, NC 28216	L68M23559	\$ 62.88	
02316433	William S. Kilburn	Lynn Kilburn	5517 Mountain Point Ln	5517 Mountain Point Ln	Charlotte, NC 28216	L69M23558	\$ 62.88	
02316434	Thomas F. Wyke	Barbara H. Wyke	5525 Mountain Point Ln	5525 Mountain Point Ln	Charlotte, NC 28214	L70M23558	\$ 62.88	
02316435	James C. Leist	Dorothy M. Leist	5533 Mountain Point Ln	5533 Mountain Point Ln	Charlotte, NC 28216	L71M23558	\$ 62.88	
02316436	Samuel Spaulding	Hazel Spaulding	5601 Mountain Point Ln	5601 Mountain Point Ln	Charlotte, NC 28216	L72M23558	\$ 62.88	
02316437	Llewellyn Scott	Linda Scott	5619 Mountain Point Ln	5619 Mountain Point Ln	Charlotte, NC 28216	L73M23558	\$ 62.88	
02316438	William L. Howe	Janis M. Howe	5701 Mountain Point Ln	5701 Mountain Point Ln	Charlotte, NC 28216	L74M23558	\$ 62.88	
02316439	Kelly A Doherty		5707 Mountain Point Ln	5707 Mountain Point Ln	Charlotte, NC 28216	L75M23558	\$ 62.88	
02316440	Michael S. Hoyt	Linda C. Hoyt	5711 Mountain Point Ln	5711 Mountain Point Ln	Charlotte, NC 28216	L76M23558	\$ 62.88	
02316441	Andrew J. Horvath	Linda R. Horvath	5715 Mountain Point Ln	10115 Patrick Henry Ln	Charlotte, NC 28277	L77M23558	\$ 62.88	
02316442	Randy C. Dixon	Alice M. Dixon	11901 Mountain Crest Cr	11901 Mountain Crest Cr	Charlotte, NC 28216	L78M23558	\$ 62.88	
02316443	R. Gary Keith		11905 Mountain Crest Cr	11718 Kennewick Rd	Charlotte, NC 28216	L79M23558	\$ 62.88	
02316444	Hal Archie Lentz	Bonnie L Foster	11904 Mountain Crest Cr	11904 Mountain Crest Cr	Charlotte, NC 28216	L80M23558	\$ 62.88	
02316445	Kelly H. Randall	Teresa Kelly Randall	11902 Mountain Crest Cr	11902 Mountain Crest Cr	Charlotte, NC 28216	L81M23558	\$ 62.88	
02316446	Donna R. Keith		11900 Mountain Crest Cr	11718 Kennewick Rd	Charlotte, NC 28216	L82M23558	\$ 62.88	
02316447	David G. Fisher	Pamela Fisher	5807 Mountain Point Ln	11928 Pinnacle Point Ln	Charlotte, NC 28216	L83M23558	\$ 62.88	
<b>Mecklenburg County</b> North Carolina <b>LUESA</b>		<b>Revised by RB ( November 30, 2012)</b>		Source: tax maps Tax records. Method:ACAD,digitizing	<b>Mountain Point Subdivision</b> SL 96-06 Street Lighting Assessment Project Final Assessment Roll Operation Costs FY 2012			<b>Total: \$ 5,407.54</b>



Mecklenburg County  
North Carolina  
LUESA

Drawn By KI (August 15, 2012)  
Checked by DC (August 15, 2012)  
Approved by DC (August 15, 2012)  
Page 1 of 1

Source: paper tax maps,  
tax records.  
Method: ArcMap, Digitizing

Mountain Point Subdivision  
SL 96 - 06  
Street Lighting Assessment Program  
Final Assessment Roll  
Operation Costs FY 2012