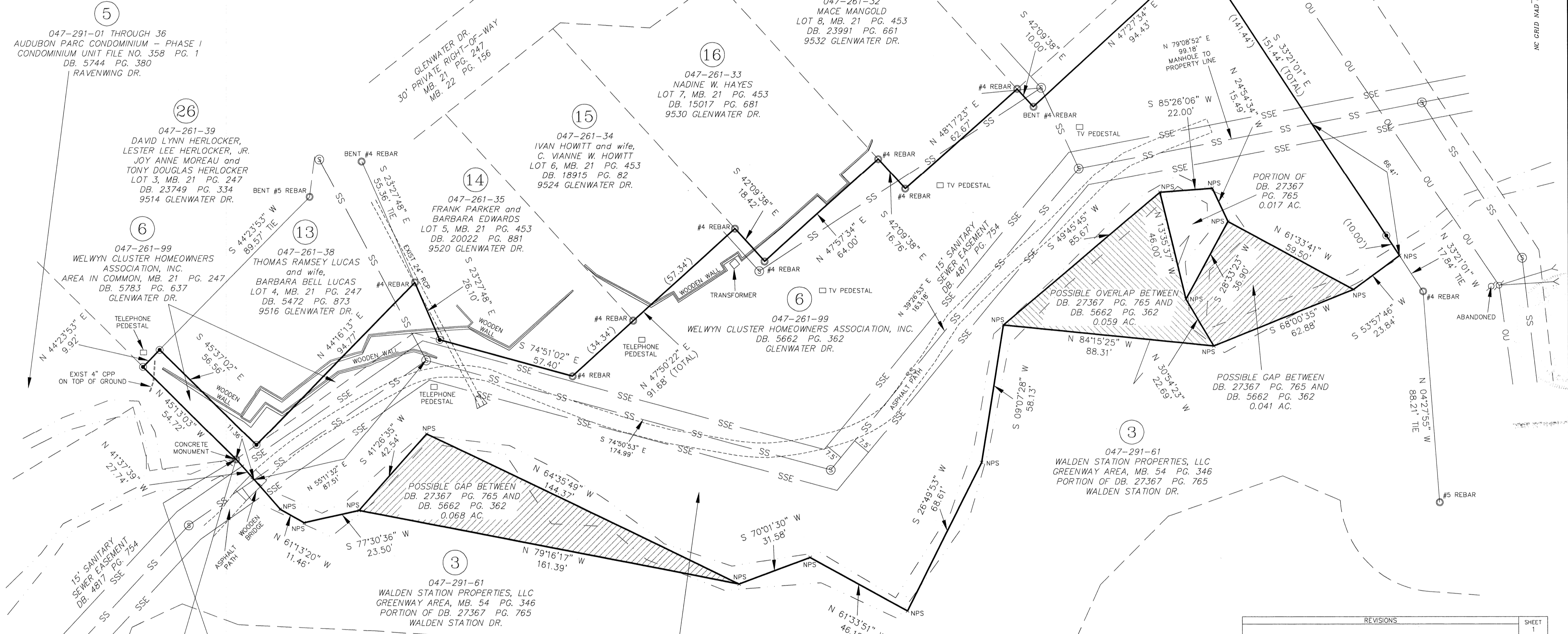


- NOTES:
1. TRAVERSE ADJUSTED BY THE LEAST SQUARES ADJUSTMENT METHOD.
 2. ALL DISTANCES ARE HORIZONTAL GROUND DISTANCES UNLESS OTHERWISE NOTED.
 3. AREAS DETERMINED BY COORDINATE COMPUTATIONS.
 4. NC GRID NAD 83 (2011) EPOCH 2010.00 BASIS OF BEARING WAS DERIVED FROM NCGS NETWORK RTK BETWEEN 03-21-2013 AND 03-25-2013 (HORIZONTAL POSITIONAL ACCURACY = 0.08) USING FIXED CONTROL STATION "CONCORD CORS ARP" (N=595,611.29', E=1,533,753.95') AND GEOID MODEL GEOID12A. UNITS ARE US SURVEY FEET.
 5. AREA IS LOCATED IN ZONE X (AREAS DETERMINED TO BE OUTSIDE THE 0.2% ANNUAL CHANCE FLOODPLAIN; AREAS OUTSIDE FUTURE CONDITIONS 1% ANNUAL CHANCE FLOODPLAIN) AS SCALED FROM F.I.R.M. MAP NO. 3710457700J; EFFECTIVE DATE MARCH 2, 2009.
 6. NO UNDERGROUND UTILITIES WERE LOCATED WITH THIS SURVEY.

- REFERENCES:
1. ALL DEEDS AND MAPS SHOWN HEREON.
 2. MAP TITLED "BOUNDARY OF REMAINDER OF UNIVERSITY PLACE" BY CONCORD ENGINEERING & SURVEYING, INC.; LAST REVISED 03-19-1986; JOB NO.: 86-03-17.
 3. MAP TITLED "RECOMBINATION SURVEY OF 7.996 ACRES AT UNIVERSITY PLACE" BY CONCORD ENGINEERING & SURVEYING, INC.; LAST REVISED 03-30-1995; JOB NO.: 94-12-17.



NC GRID NAD 83(2011)
EPOCH 2010.00
N = 574,090.78'
E = 1,478,657.82'

- LEGEND
- EXISTING IRON PIN (AS DESCRIBED)
 - SET IRON PIN (#5 REBAR)
 - × NO POINT SET
 - UTILITY POLE
 - GUY WIRE
 - SANITARY SEWER MANHOLE
 - FLARED END SECTION
 - BOUNDARY AS SURVEYED
 - TIE LINE
 - BOUNDARY BY DEED OR MAP
 - SSE EXISTING SANITARY SEWER EASEMENT
 - SS CREEK OR BRANCH
 - SS SANITARY SEWER LINE
 - OU OVERHEAD UTILITY LINE

047-261-99
DB. 5783 PG. 637
DB. 5662 PG. 362
1.000 AC.
NOT INCLUDING:
0.068 AC. POSSIBLE GAP
0.059 AC. POSSIBLE OVERLAP
0.041 AC. POSSIBLE GAP
0.017 AC. PORTION OF DB. 27367 PG. 765



I, JAMES E. DAVIS, CERTIFY THAT THIS MAP WAS DRAWN UNDER MY SUPERVISION FROM AN ACTUAL SURVEY MADE UNDER MY SUPERVISION (DEEDS RECORDED IN DB. 5662 PG. 362, DB. 5783 PG. 637 AND DB. 27367 PG. 765 AND MAP RECORDED IN MB. 21 PG. 247); THAT THE BOUNDARIES NOT SURVEYED ARE SHOWN AS BROKEN LINES PLOTTED FROM INFORMATION FOUND IN DEEDS AS SHOWN; THAT THE RATIO OF PRECISION IS 1:21,900; THAT THIS MAP MEETS THE REQUIREMENTS OF THE STANDARDS OF PRACTICE FOR LAND SURVEYING IN NORTH CAROLINA (21 NCAC 56.1600); AND THAT THIS SURVEY IS OF AN EXISTING PARCEL OR PARCELS OF LAND AND DOES NOT CREATE A NEW STREET OR CHANGE AN EXISTING STREET.

WITNESS MY HAND AND OFFICIAL SEAL THIS 4th DAY OF OCTOBER, 2013

PROFESSIONAL LAND SURVEYOR LICENSE NO. L-3747

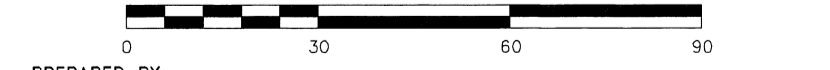
REVISIONS	SHEET
	1
	OF 1

BOUNDARY SURVEY FOR PROPERTY OF:
WELWYN CLUSTER HOMEOWNERS ASSOCIATION, INC.
CITY OF CHARLOTTE, MECKLENBURG COUNTY, NC

FOR:
CHARLOTTE
ENGINEERING & PROPERTY MANAGEMENT
BARTON CREEK GREENWAY

DATE: 10-01-2013
SCALE: 1" = 30'
ACAD FILE: 130338_000.dwg

COMPUTED BY: RAP
DRAWN BY: RAP
CHECKED BY: JED



PREPARED BY:
CESI
LAND DEVELOPMENT SERVICES
45 SPRING STREET SW CONCORD (704) 786-5404
CONCORD, NC 28025 FAX (704) 786-7454
N.C. FIRM LICENSE NO. C-0263
© CESI 2013 CESI JOB NO.: 130505.000

NC GRID NAD 83(2011) EPOCH 2010.00