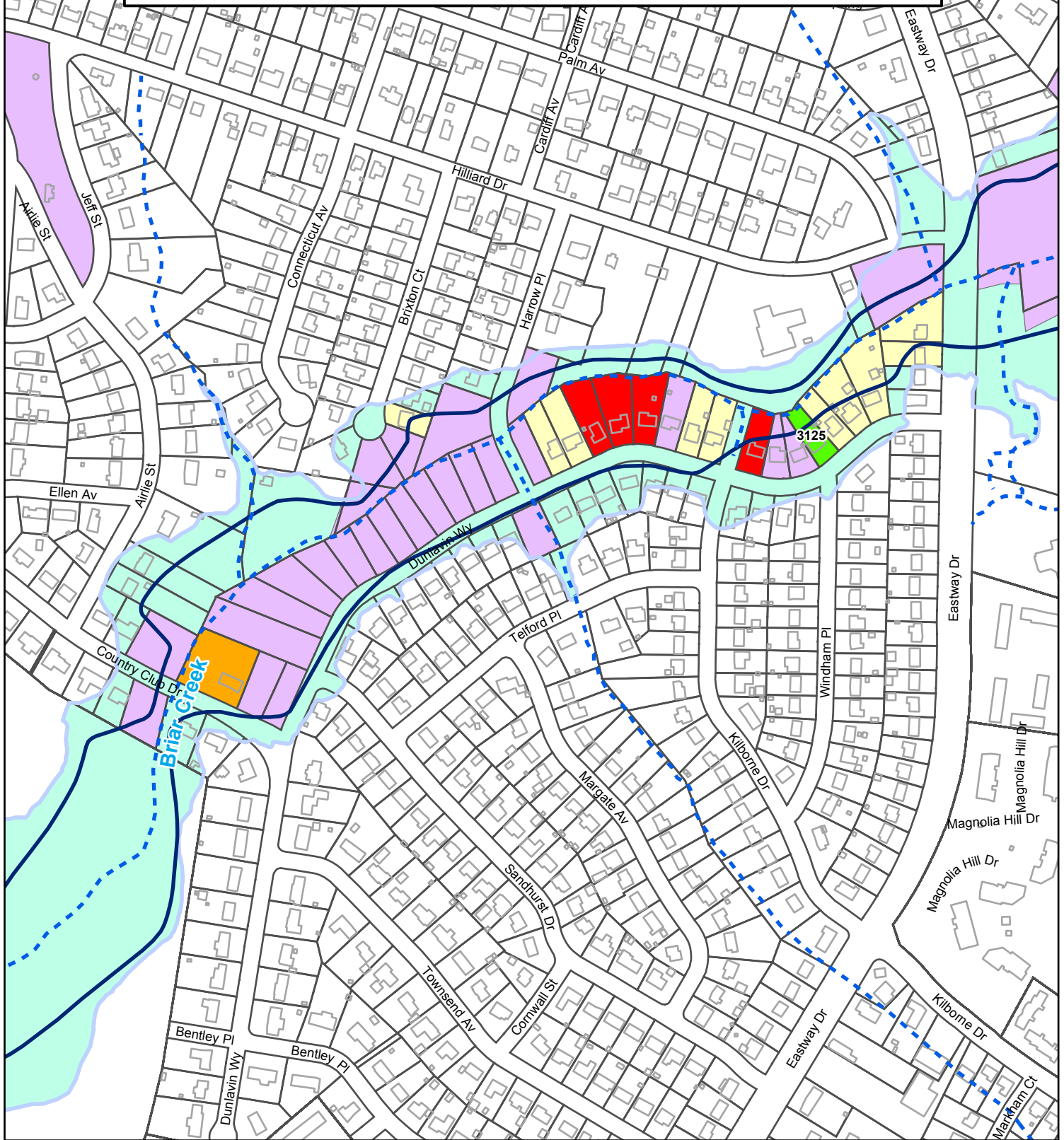


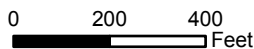
# FLOODPLAIN PROPERTY ACQUISITION

## FY2014 CIP - 3125 Dunlavin Way

### Briar Creek



Charlotte-Mecklenburg Storm Water Services  
 PHONE: 311 WEB: stormwater.charmeck.org



#### LEGEND

##### Acquisition Status

- Requesting Approval
- Non-Participation
- Mecklenburg County/City of Charlotte Owned
- Previously Approved
- Potential Acquisitions

- Parcels
- - - Creeks
- Floodplain
- Community Floodway