

Tax # 025-113-98
Mecklenburg County
DB 26191-350

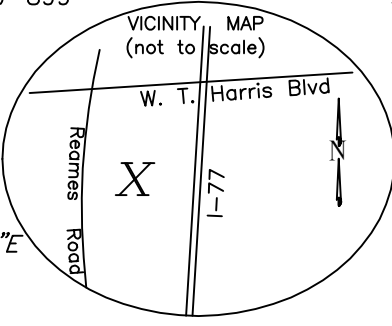
Tax # 025-113-01
Mecklenburg County
DB 13057-721

NCGS Coordinates:
[NAD_83(2011)]
N=585,106.36'
E=1,445,963.67'

Tax # 025-113-23
Mecklenburg County
DB 25329-266
Tract 3 - Greenway
MB 49-899

Tax # 025-113-22
Long Creek Club Apartments, LLC
DB 27780-794

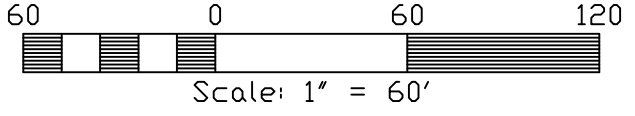
Tax # 025-113-22
Long Creek Club Apartments, LLC
DB 27780-794



New Greenway Access Easement Area 1
0.3913 acres
(17,046 s.f.)

LEGEND

- ☒ air conditioner
- ▤ catch basin/yard inlet
- ch. chord
- cleanout
- CMF concrete monument found
- CNF concrete nail found
- conc. concrete
- ⊕ fire hydrant
- gas meter
- ⊗ gas valve
- ← guy wire anchor
- IPF iron pipe found
- IRF/S Iron rebar found/set
- ⊙ light pole
- L,R curve length & radius
- MB,DB record map, deed references
- PKF/S PK Nail found/set
- RCP reinforced concrete pipe
- R/W right of way
- ⊙ sanitary sewer manhole
- s.f. square feet (by coordinates)
- ⊙ storm drain manhole
- utility pole
- ⊕ water valve
- XFRMR electric transformer
- ss- sanitary sewer line
- ou- overhead utility wires
- x- fence line



See Notes on Sheet 2 of 2.

This map is for easement acquisition only and does not reflect a current boundary survey of any of the properties shown. Monumentation shown was located on May 9, 2013.

Andrew G. Zoutewelle
Professional Land Surveyor NC License No. L-3098

Copyright 2013 *Sheet 1 of 2*

ACCESS EASEMENT EXHIBIT
LONG CREEK GREENWAY
CHARLOTTE, MECKLENBURG COUNTY, N.C.
for MECKLENBURG COUNTY REAL ESTATE SERVICES
Property of: Long Creek Club Apartments, LLC
Survey Date: May 9, 2013

A.G. ZOUTEWELLE
SURVEYORS

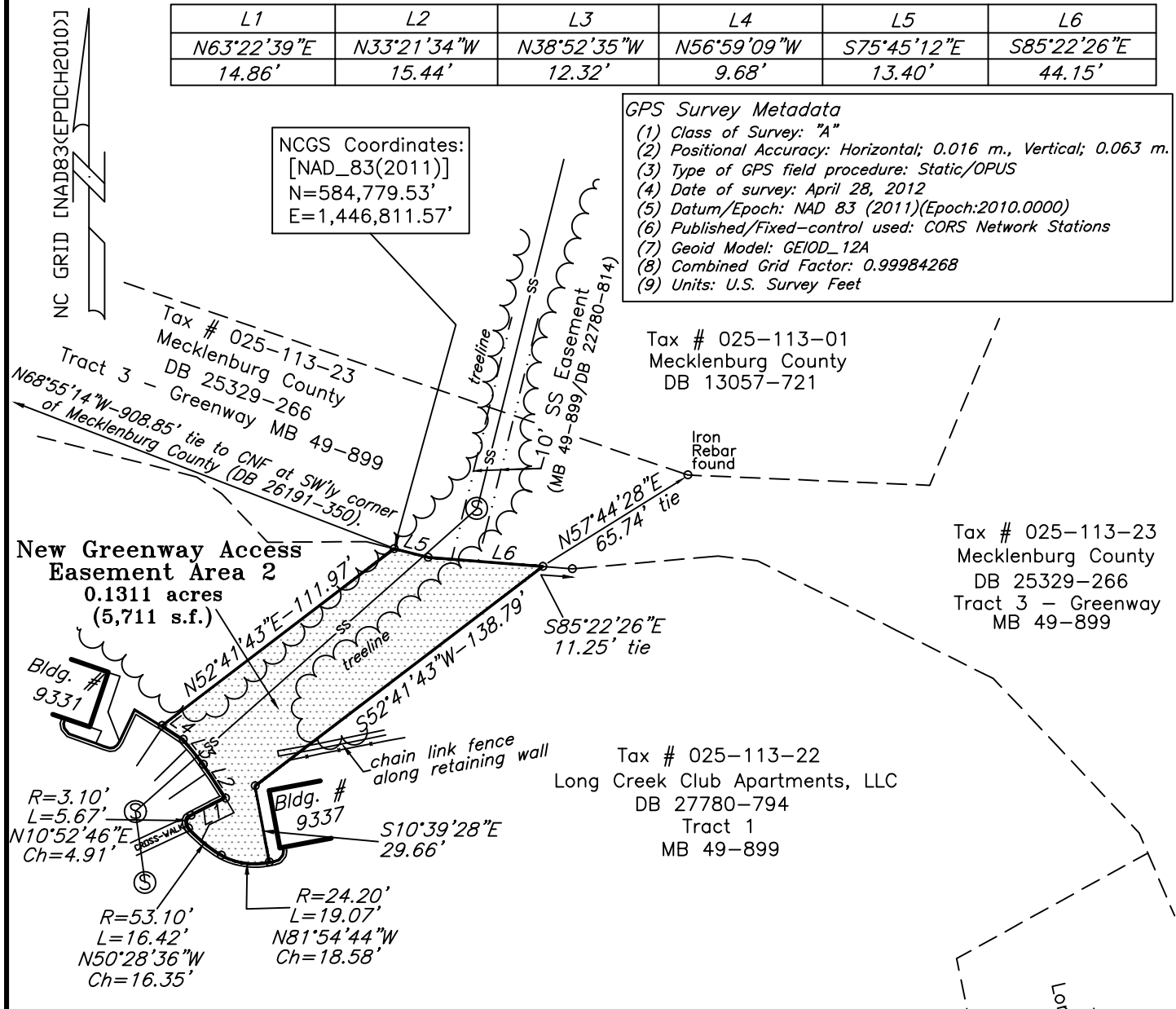
1418 East Fifth St. Charlotte, NC 28204
Phone: 704-372-9444 Fax: 704-372-9555
Firm Licensure Number: C-1054

L1	L2	L3	L4	L5	L6
N63°22'39"E	N33°21'34"W	N38°52'35"W	N56°59'09"W	S75°45'12"E	S85°22'26"E
14.86'	15.44'	12.32'	9.68'	13.40'	44.15'

NCGS Coordinates:
[NAD_83(2011)]
N=584,779.53'
E=1,446,811.57'

GPS Survey Metadata

- (1) Class of Survey: "A"
- (2) Positional Accuracy: Horizontal; 0.016 m., Vertical; 0.063 m.
- (3) Type of GPS field procedure: Static/OPUS
- (4) Date of survey: April 28, 2012
- (5) Datum/Epoch: NAD 83 (2011)(Epoch:2010.0000)
- (6) Published/Fixed-control used: CORS Network Stations
- (7) Geoid Model: GEIOD_12A
- (8) Combined Grid Factor: 0.99984268
- (9) Units: U.S. Survey Feet

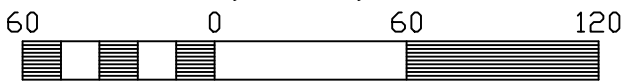


General Notes:

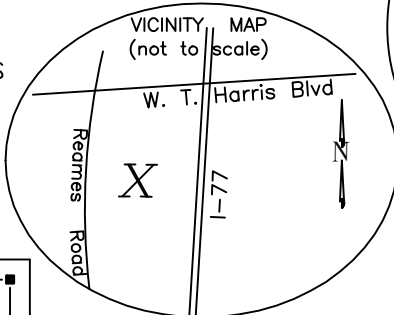
1. The Tax Identification Numbers shown hereon are as per Mecklenburg County G.I.S.
2. This survey does not reflect boundary surveys for adjoining parcels referenced hereon. Tie lines are shown to selected property corners for appropriate reference.
3. This survey does not reflect a complete title examination which may reveal additional easements, restrictions and other matters of title.
4. See also plats recorded in Map Book 38, Page 775 and Map Book 49, Page 899.
5. This survey does not reflect a zoning analysis which may reveal other setbacks and/or buffers not shown hereon. Any development of this property is subject to the approval of the City of Charlotte.
6. This survey reflects utilities per observed surface indications only. Contact the NC ONECALL Utility Location Service at 1-800-632-4949 before any design, digging or excavation.
7. This property IS partially located within a FEMA flood hazard district as depicted on FEMA Flood Insurance Rate Map (FIRM) 3710454800J which bears an effective date of March 2, 2009. Flood lines/zones not shown hereon.
8. Any construction or use within any delineated Flood areas is subject to the restrictions imposed by the Floodway Regulations of the City of Charlotte.
9. Grid control and orientation provided by Survey Mapping and Control, 12727 Dorman Road, Pineville, N.C. See metadata shown hereon.

Copyright 2013
ACCESS EASEMENT EXHIBIT

LONG CREEK GREENWAY
CHARLOTTE, MECKLENBURG COUNTY, N.C.
for MECKLENBURG COUNTY REAL ESTATE SERVICES
Property of: Long Creek Club Apartments, LLC
Survey Date: May 9, 2013



A.G. ZOUTEWELLE
SURVEYORS
1418 East Fifth St. Charlotte, NC 28204
Phone: 704-372-9444 Fax: 704-372-9555
Firm Licensure Number: C-1054



Sheet 2 of 2

Andrew G. Zoutewelle
Professional Land Surveyor
NC License No. L-3098